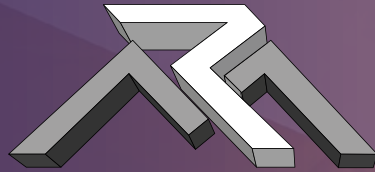




E M B O S S



www.mossyrock.design

SCULPTURED SURFACES
FOR ARCHITECTURE
AND INTERIOR DESIGN

EMBOSS represents the union of more different souls that create a unique product. We are designers and artisans working together to create metal cladding panels that make a deep decorative impact. We cater to architects, designers, installers, distributors and end-users who want to customize their projects with extraordinary and engaging panels. Thanks to an innovative production process that allows to shape metal sheets, we offer panels that become three-dimensional surfaces with vibrant and multifaceted effects.

THREE-DIMENSIONAL



Emboss sculptured surfaces are metal panels with three-dimensional decorations created with a unique manufacturing technique: each model is carefully designed and mechanically reproduced with a plastic deformation system that combines craftsmanship and industrialization.

CUSTOMIZABLE



Our production process offers numerous opportunities: it is possible to process solid, perforated or expanded sheets in aluminum, galvanized steel, stainless steel, titanium zinc, brass and copper. We propose different standard patterns and the possibility to customize them to give uniqueness and originality to each project.

VERSATILE



Emboss can be used in many applications for architecture and interior design: from cladding facades to false ceilings, from wall coverings to shielding architectural elements. The solid sheet panels are used for complete covering, while with perforated or expanded sheets, transparencies can be created, suitable for lighting, solar shading and ventilation.

SUSTAINABLE



Emboss gives to the natural metal matrix a new aesthetic value of great expression through a unique process, result of the careful research by designers and artisans.

THE EMBOSS COLLECTION



BUMPS

Technical sheet Bumps panel

4



CARAPAX

Technical sheet Carapax panel

13



BRANCH

Technical sheet Branch panel

18



LINE

Technical sheet Line panel

24



QUILT

Technical sheet Quilt panel

29



SAND

Technical sheet Sand panel

33

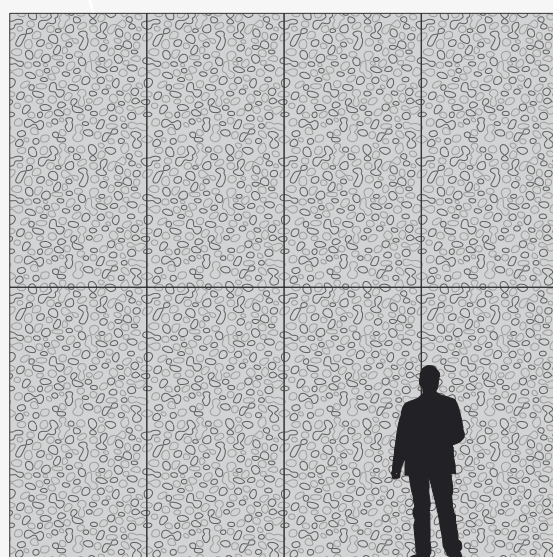


TAILOR MADE

Customization and design of new panels

37

BUMPS



Standard module: 1250x2500 mm

MATERIAL

Full sheet in aluminum, stainless steel, iron, galvanized iron, brass, copper.
Perforated sheet in aluminum, stainless steel, iron, galvanized iron.
Expanded metal in aluminum, iron.

SURFACE FINISHING

Natural metal, powder coating, liquid painting, anodizing, electro-coloring,
polished and satin metal, corten steel.

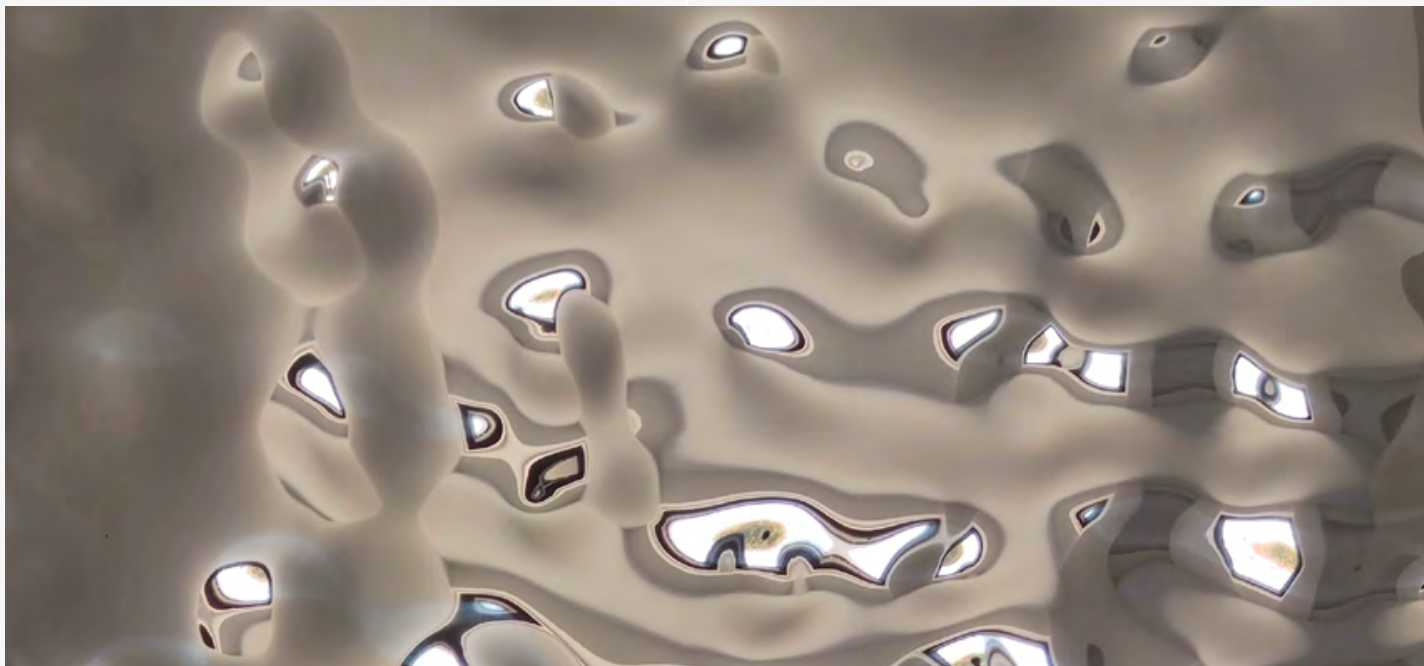
SCOPE OF USE

Facade cladding, interior cladding, false ceilings, railings etc.

TECHNICAL SPECIFICATIONS

PANEL SIZE	1250x2500 mm (maximum length on request up to 2600 mm)
THICKNESS	from 0,5 mm to 3 mm
PATTERN DEPTH	7 - 8 mm

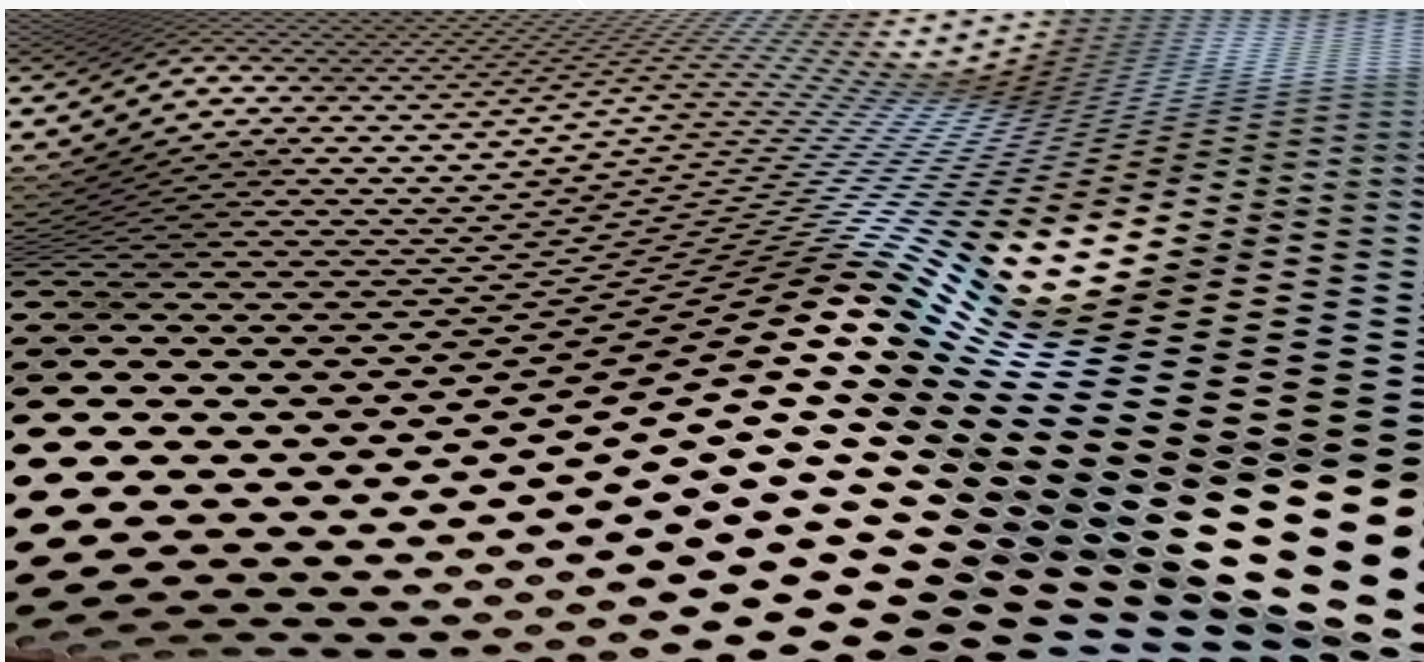
BUMPS / FULL SHEET



BUMPS / EXPANDED SHEET



BUMPS / PERFORATED SHEET



BUMPS



THE EMBOSS
PROJECTS



BUMPS



THE EMBOSS
PROJECTS



BUMPS



THE EMBOSS
PROJECTS



BUMPS



THE EMBOSS
PROJECTS



BUMPS

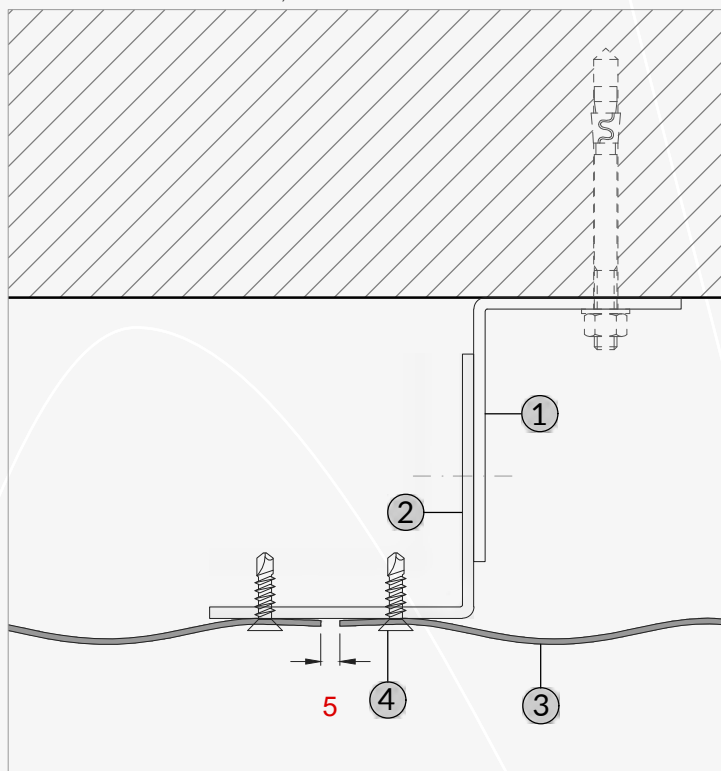


THE EMBOSS
PROJECTS



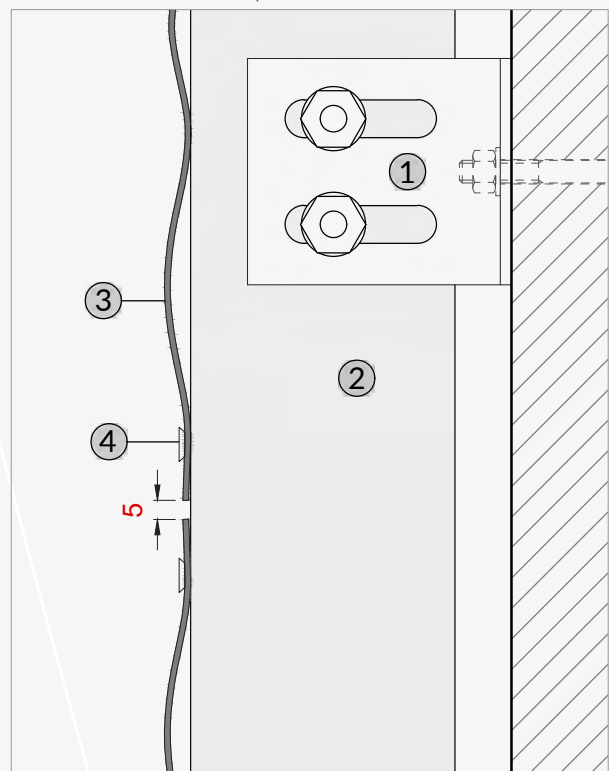


EMBOSS SYSTEM 01 HORIZONTAL SECTION TYPE, 1:2

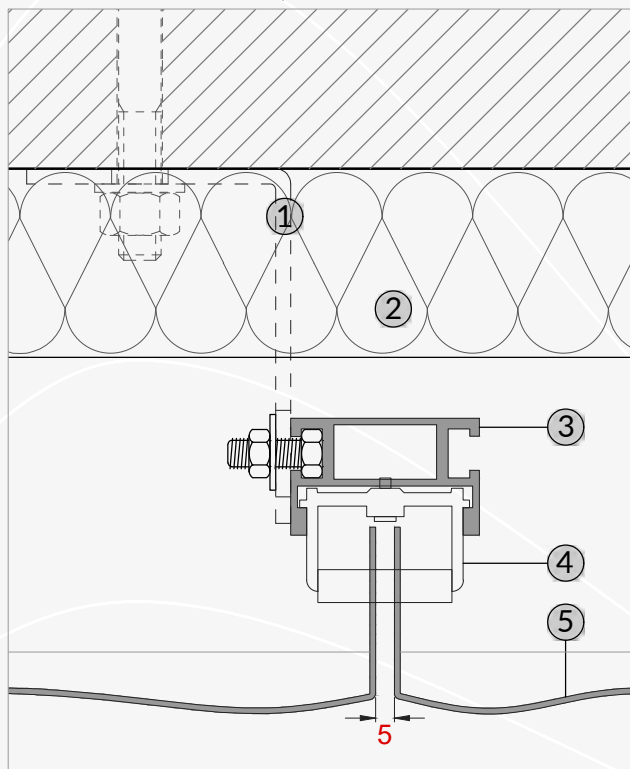


legend: 1_wall bracket, 2_aluminum strut, 3_EMBOSS panel, 4_screw or rivet

VERTICAL SECTION TYPE, 1:2

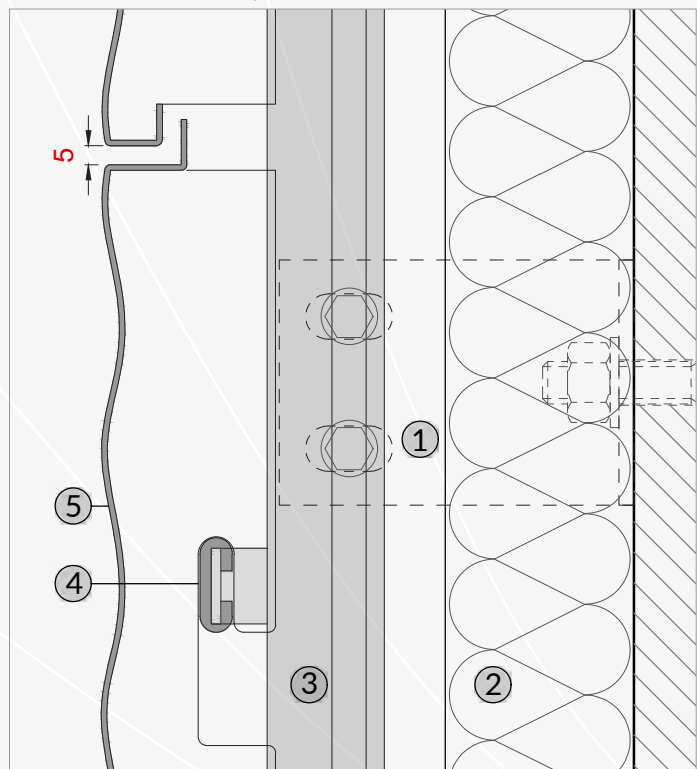


EMBOSS SYSTEM 02 HORIZONTAL SECTION TYPE, 1:2



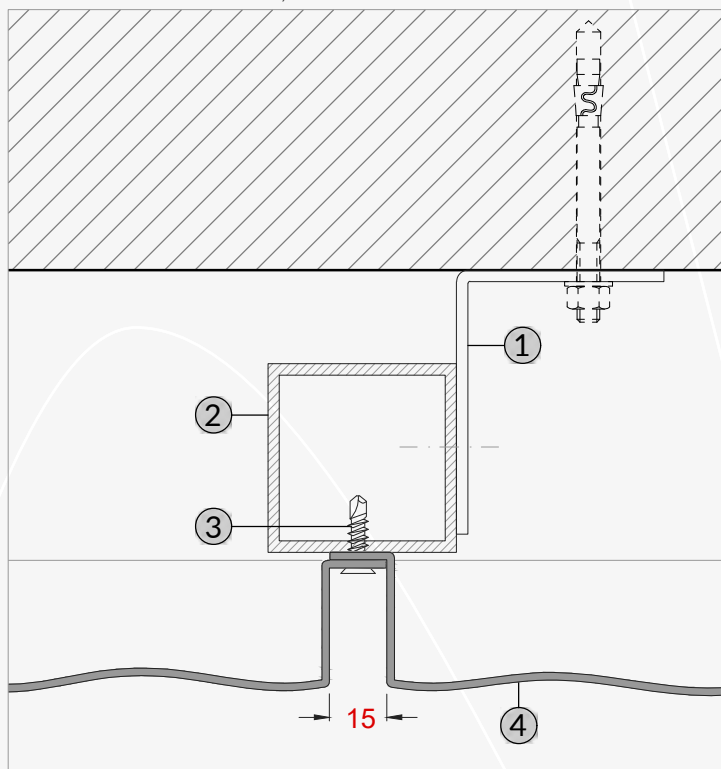
legend: 1_wall bracket, 2_insulating coat, 3_aluminum strut, 4_panel's support with anti-vibration gasket, 5_boxed EMBOSS panel

VERTICAL SECTION TYPE, 1:2



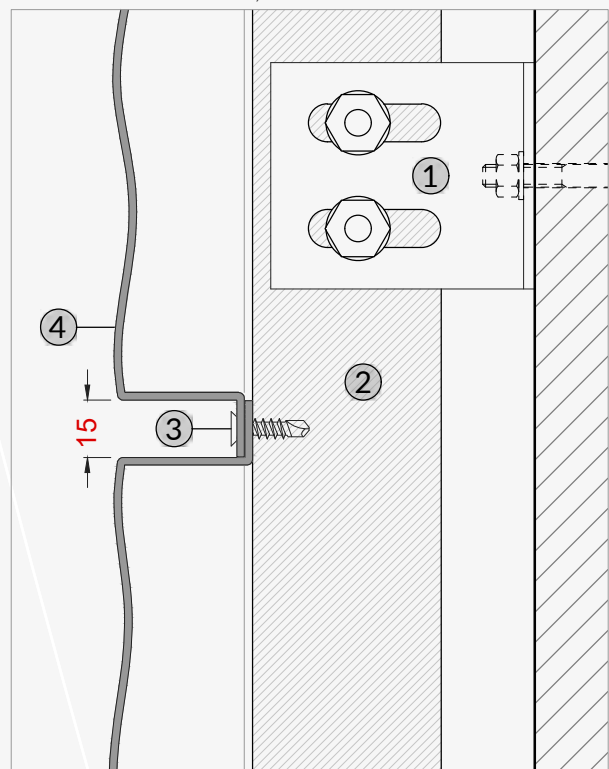


EMBOSS SYSTEM 03 HORIZONTAL SECTION TYPE, 1:2

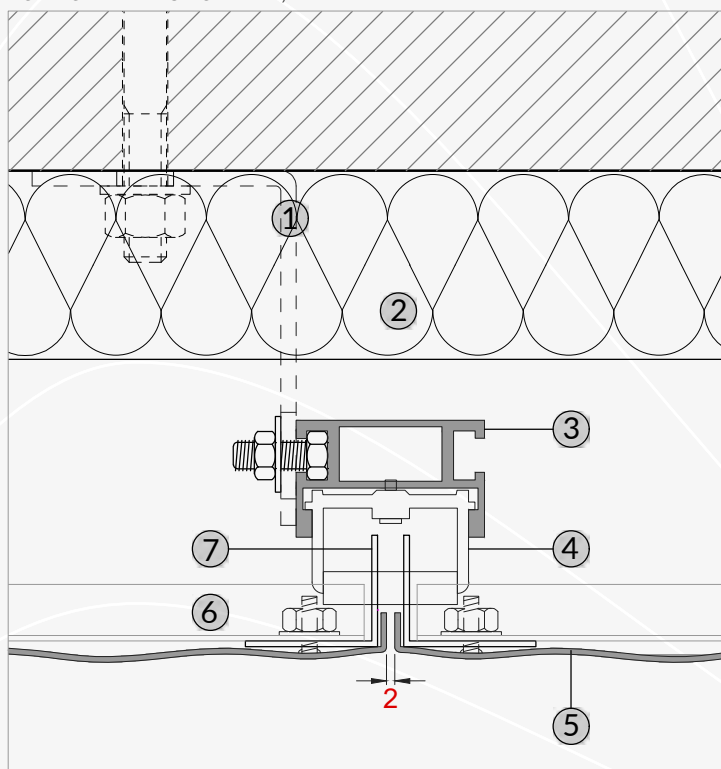


legend: 1_wall bracket, 2_aluminum strut, 3_self-drilling screw 4_boxed EMBOSS panel

VERTICAL SECTION TYPE, 1:2

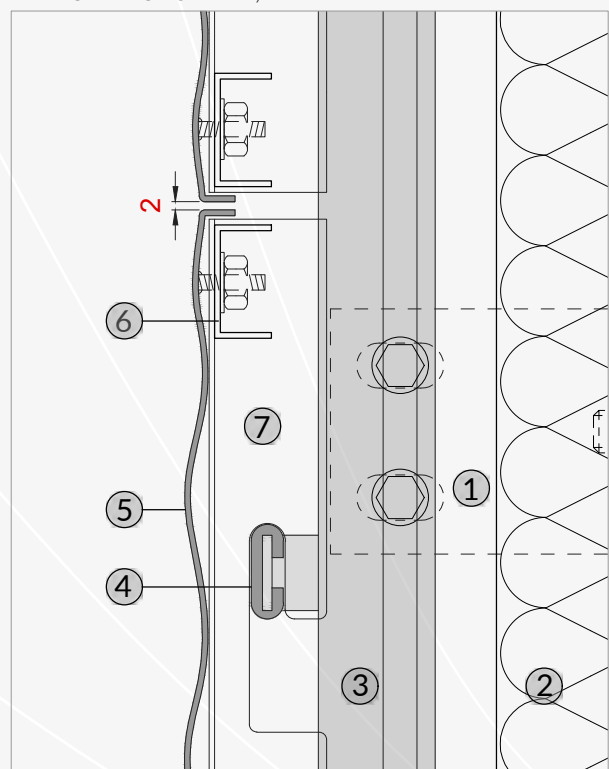


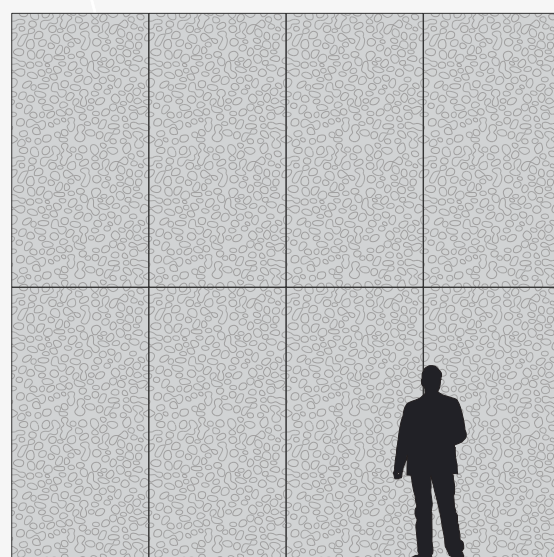
EMBOSS SYSTEM 04 HORIZONTAL SECTION TYPE, 1:2



legend: 1_wall bracket, 2_insulating coat, 3_aluminum strut, 4_panel's support with anti-vibration gasket, 5_boxed EMBOSS panel, 6_stiffening profile, 7_"L" profile with fixing system

VERTICAL SECTION TYPE, 1:2





Standard module: 1250x2500 mm

MATERIAL

Full sheet in aluminum, stainless steel, brass, copper.
Perforated sheet in aluminum, stainless steel.

SURFACE FINISHING

Polishing, anodizing, powder coating, natural metal, electro-coloring, satin metal.

SCOPE OF USE

False ceilings, interior cladding, facade cladding, etc.

TECHNICAL SPECIFICATIONS

PANEL SIZE	1250x2500 mm
THICKNESS	from 0,6 mm to 2 mm
PATTERN DEPTH	5 mm

CARAPAX / FULL SHEET



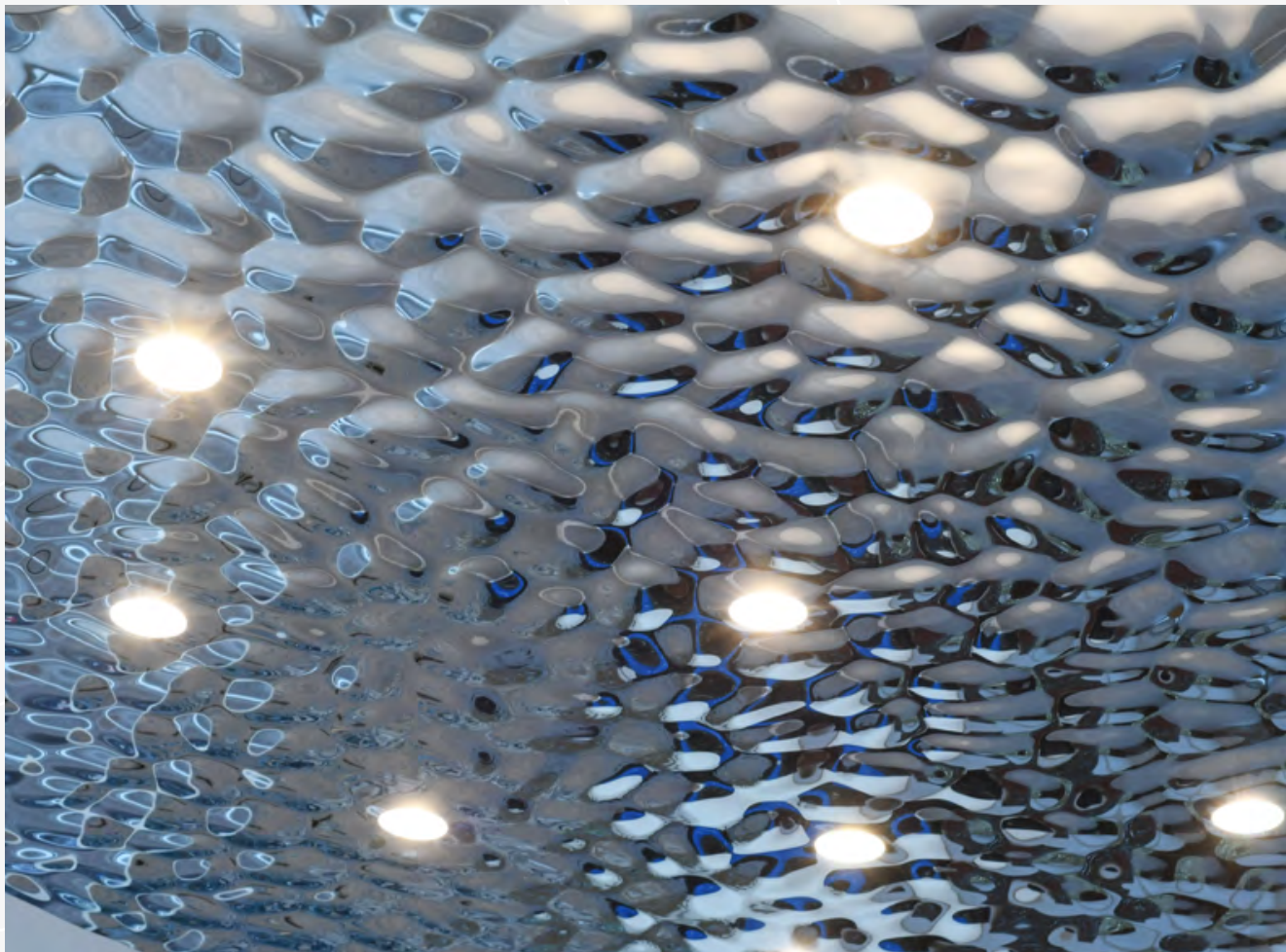
CARAPAX / FULL SHEET



CARAPAX

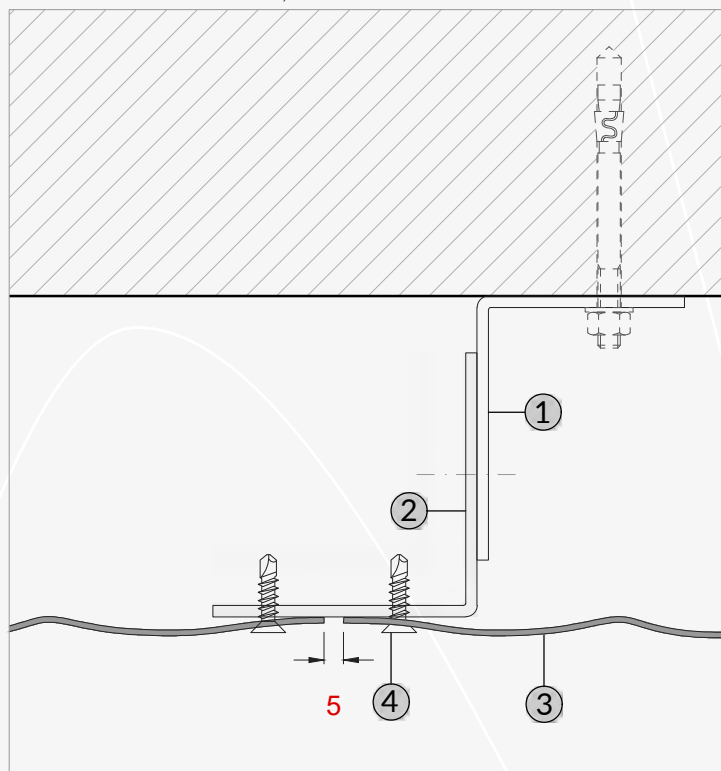


THE EMBOSS
PROJECTS

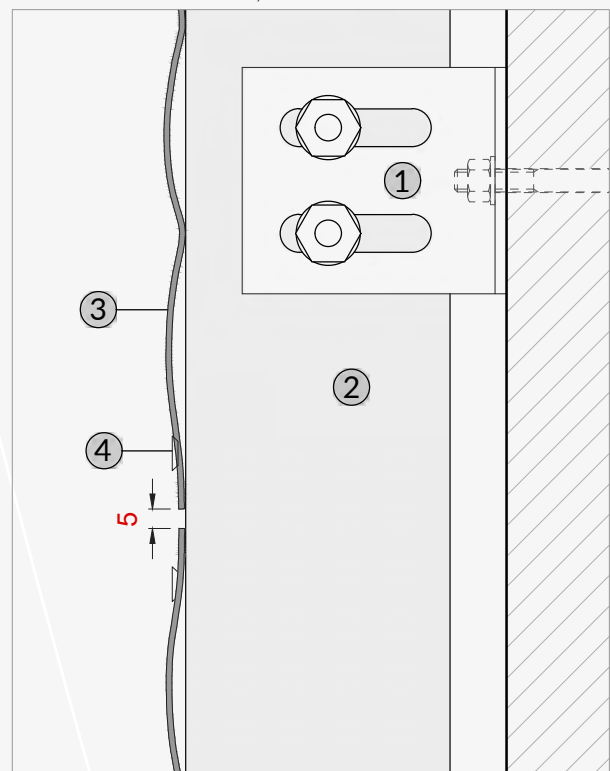


EMBOSS SYSTEM 01

HORIZONTAL SECTION TYPE, 1:2



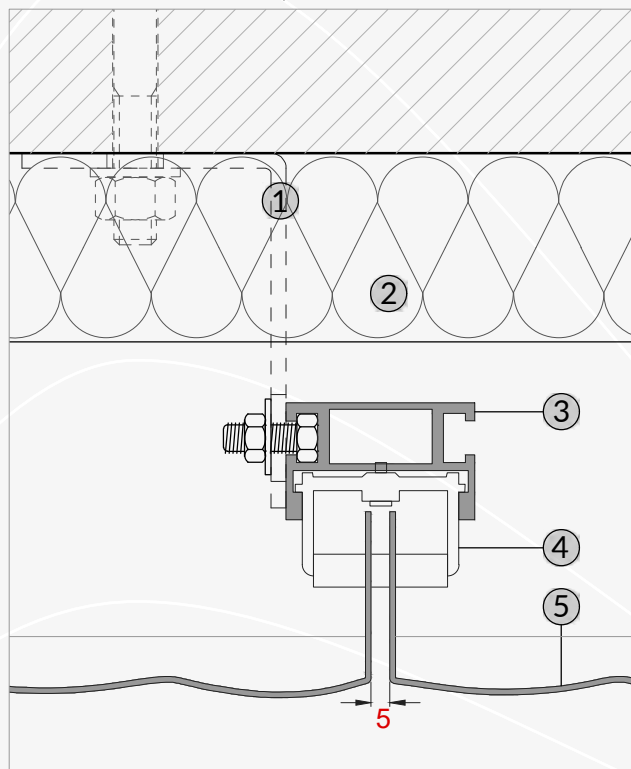
VERTICAL SECTION TYPE, 1:2



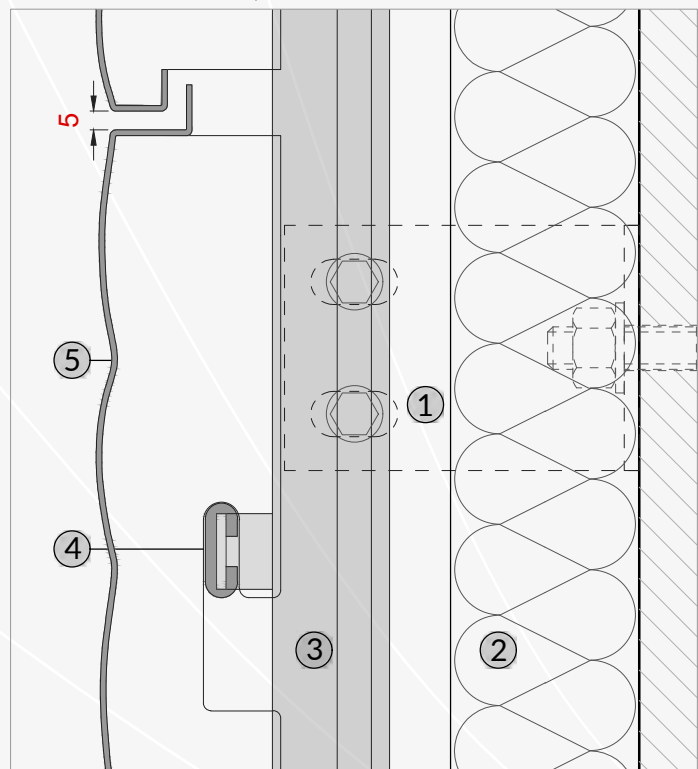
legend: 1_wall bracket, 2_aluminum strut, 3_EMBOSS panel, 4_screw or rivet

EMBOSS SYSTEM 02

HORIZONTAL SECTION TYPE, 1:2



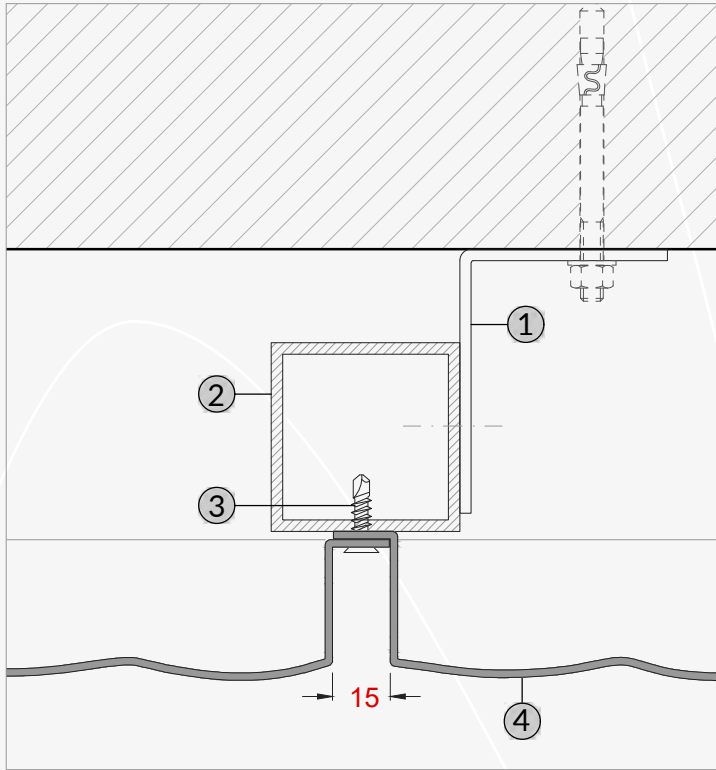
VERTICAL SECTION TYPE, 1:2



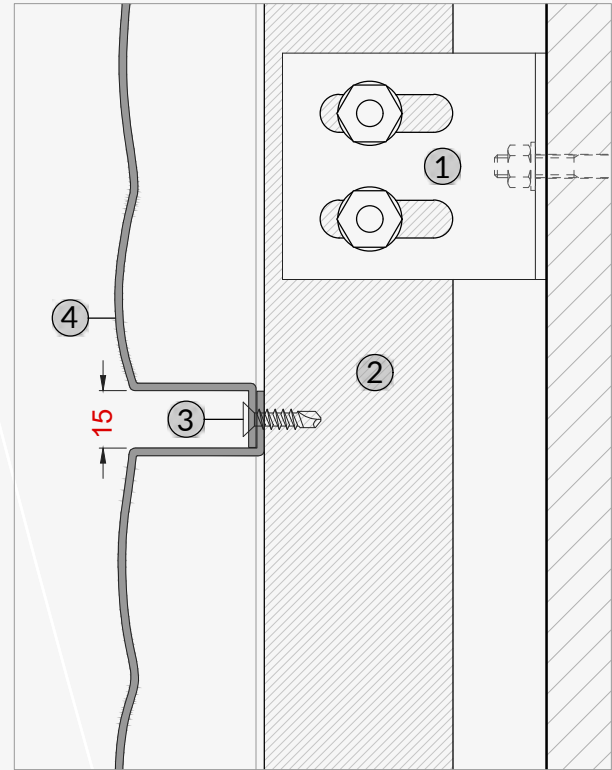
legend: 1_wall bracket, 2_insulating coat, 3_aluminum strut, 4_panel's support with anti-vibration gasket, 5_boxed EMBOSS panel

EMBOSS SYSTEM 03

HORIZONTAL SECTION TYPE, 1:2



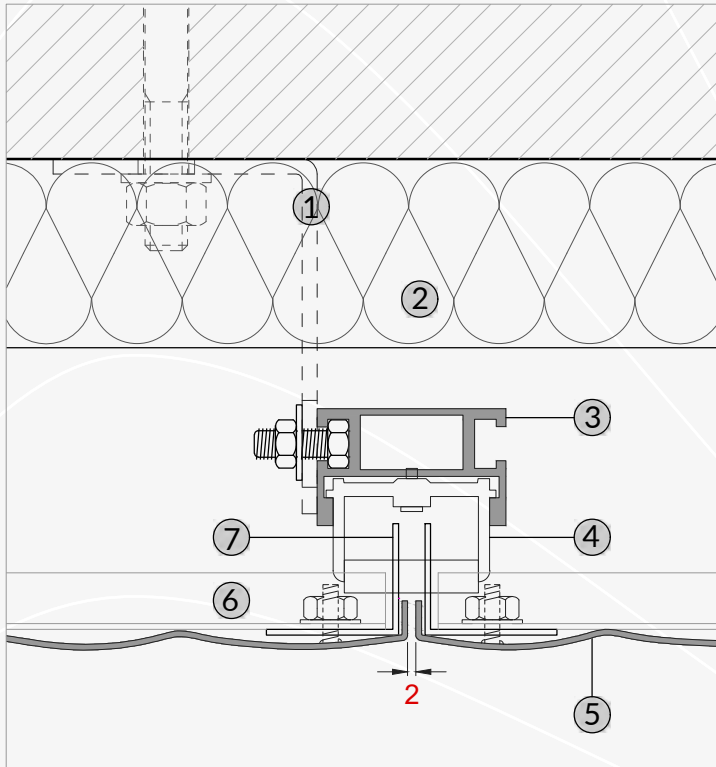
VERTICAL SECTION TYPE, 1:2



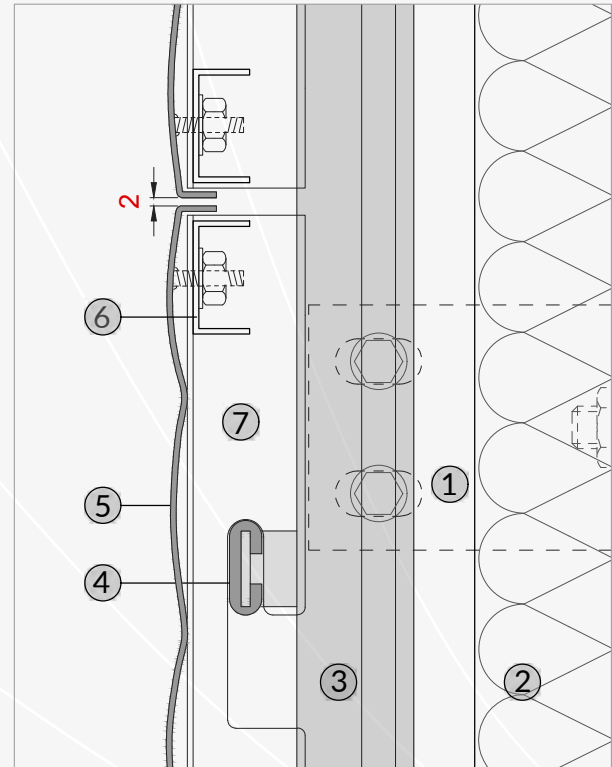
legend: 1_wall bracket, 2_aluminum strut, 3_self-drilling screw 4_boxed EMBOSS panel

EMBOSS SYSTEM 04

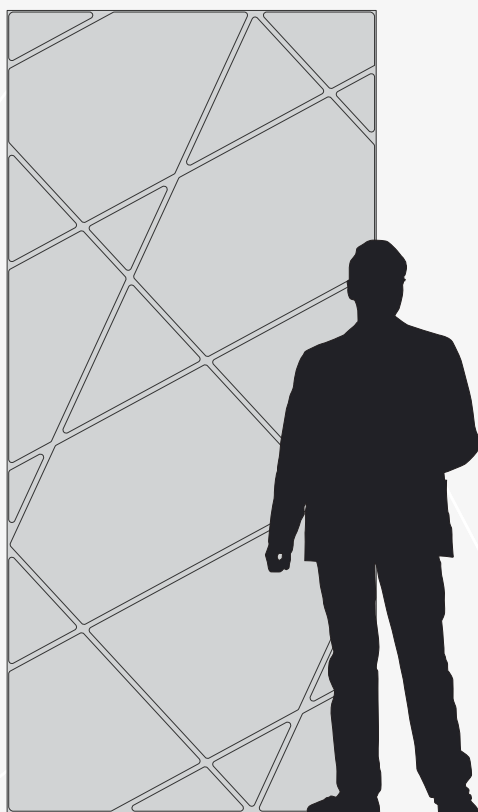
HORIZONTAL SECTION TYPE, 1:2



VERTICAL SECTION TYPE, 1:2



legend: 1_wall bracket, 2_insulating coat, 3_aluminum strut, 4_panel's support with anti-vibration gasket, 5_boxed EMBOSS panel, 6_stiffening profile, 7_"L" profile with fixing system



Standard module: 1150x2500 mm

MATERIAL

Full sheet in aluminum, stainless steel, iron, galvanized iron, brass, copper.
Perforated sheet in aluminum, stainless steel, iron, galvanized iron.
Micro expanded sheet in aluminum, steel.

SURFACE FINISHING

Natural metal, powder coating, liquid painting, anodizing, electro-coloring,
polished and satin metal.

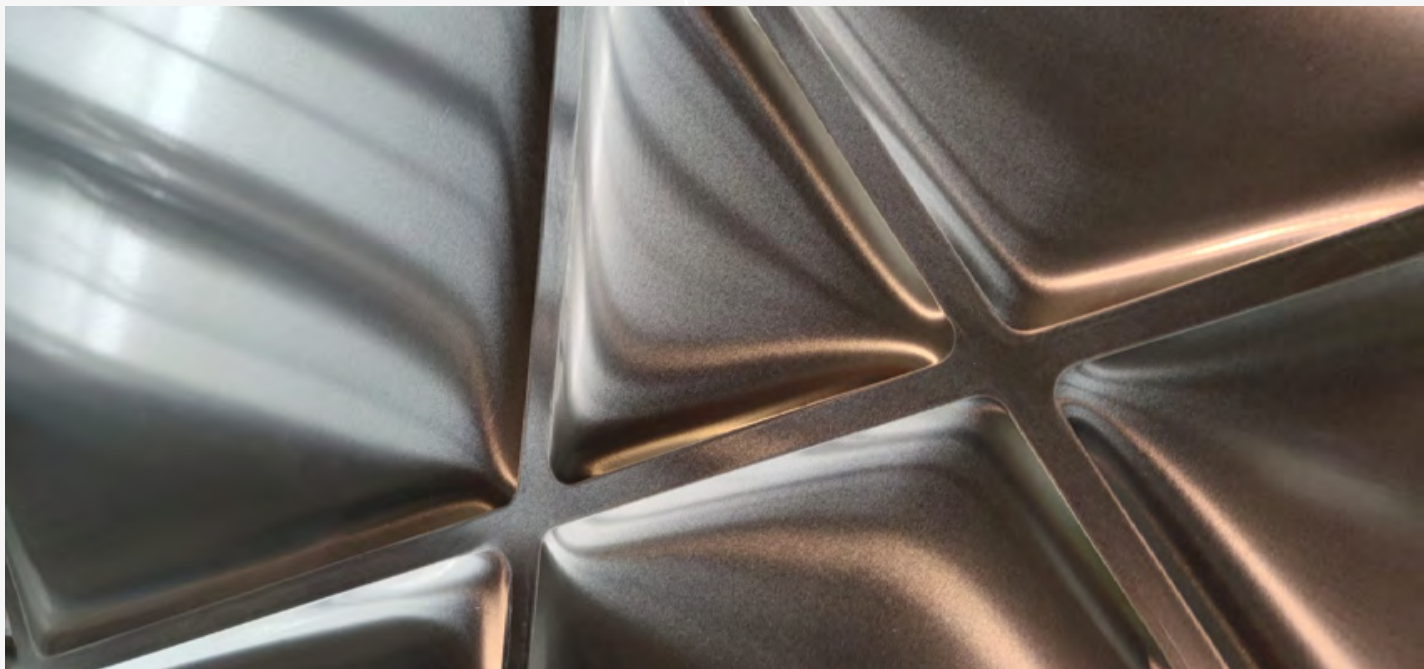
SCOPE OF USE

Facade cladding, interior cladding, false ceilings, railings, etc.

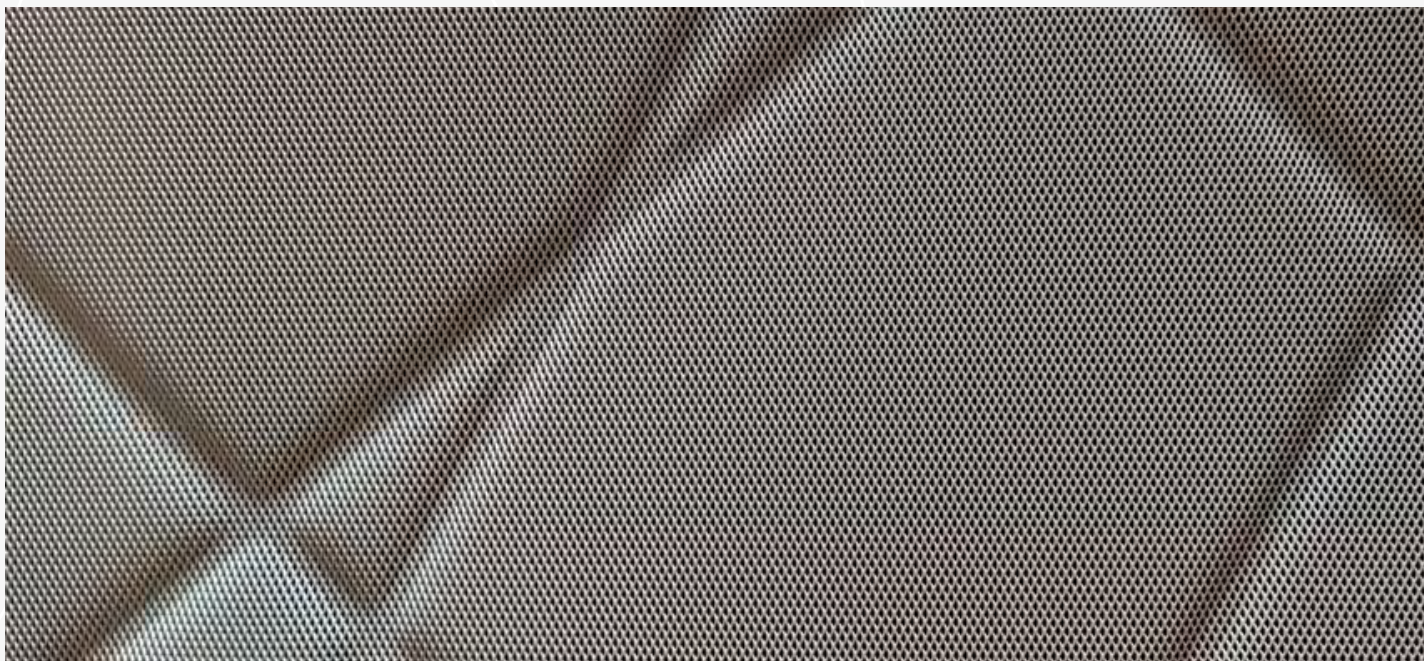
TECHNICAL SPECIFICATIONS

PANEL SIZE	1150x2500 mm
THICKNESS	from 0,5 mm to 3 mm
PATTERN DEPTH	8 mm

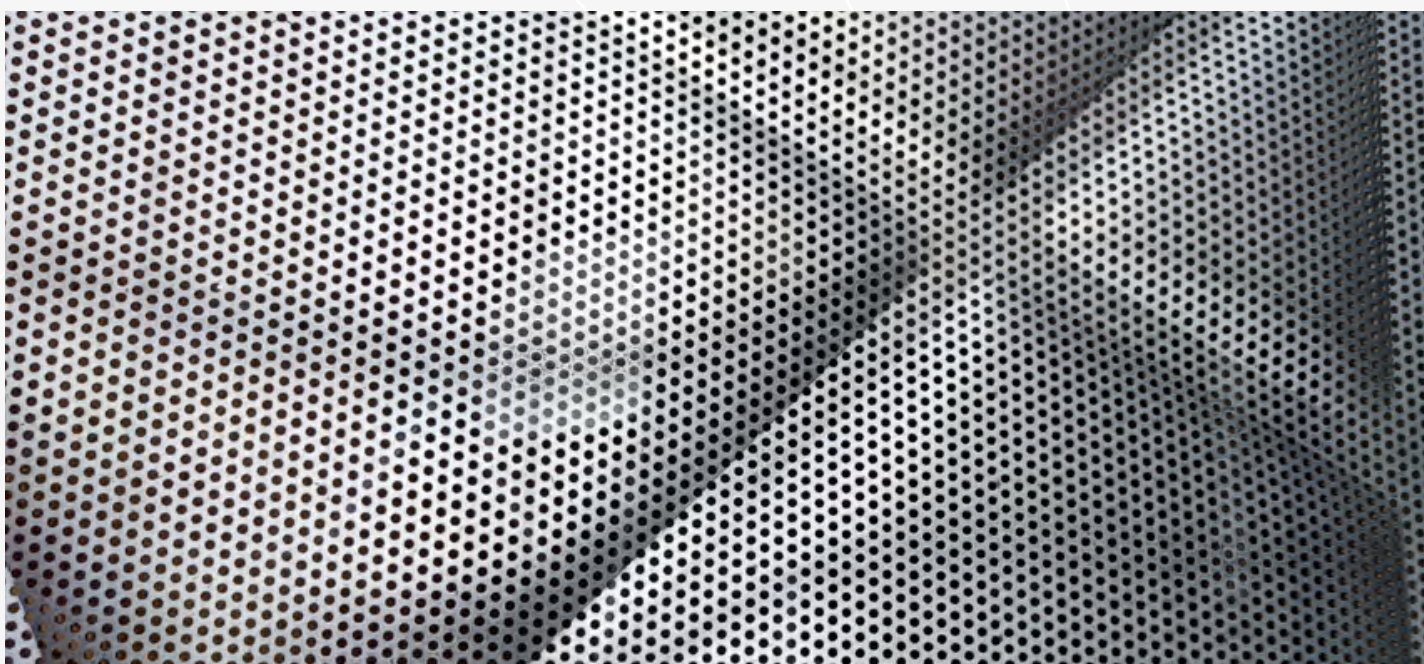
BRANCH / FULL SHEET



BRANCH / MICRO EXPANDED SHEET



BRANCH / PERFORATED SHEET

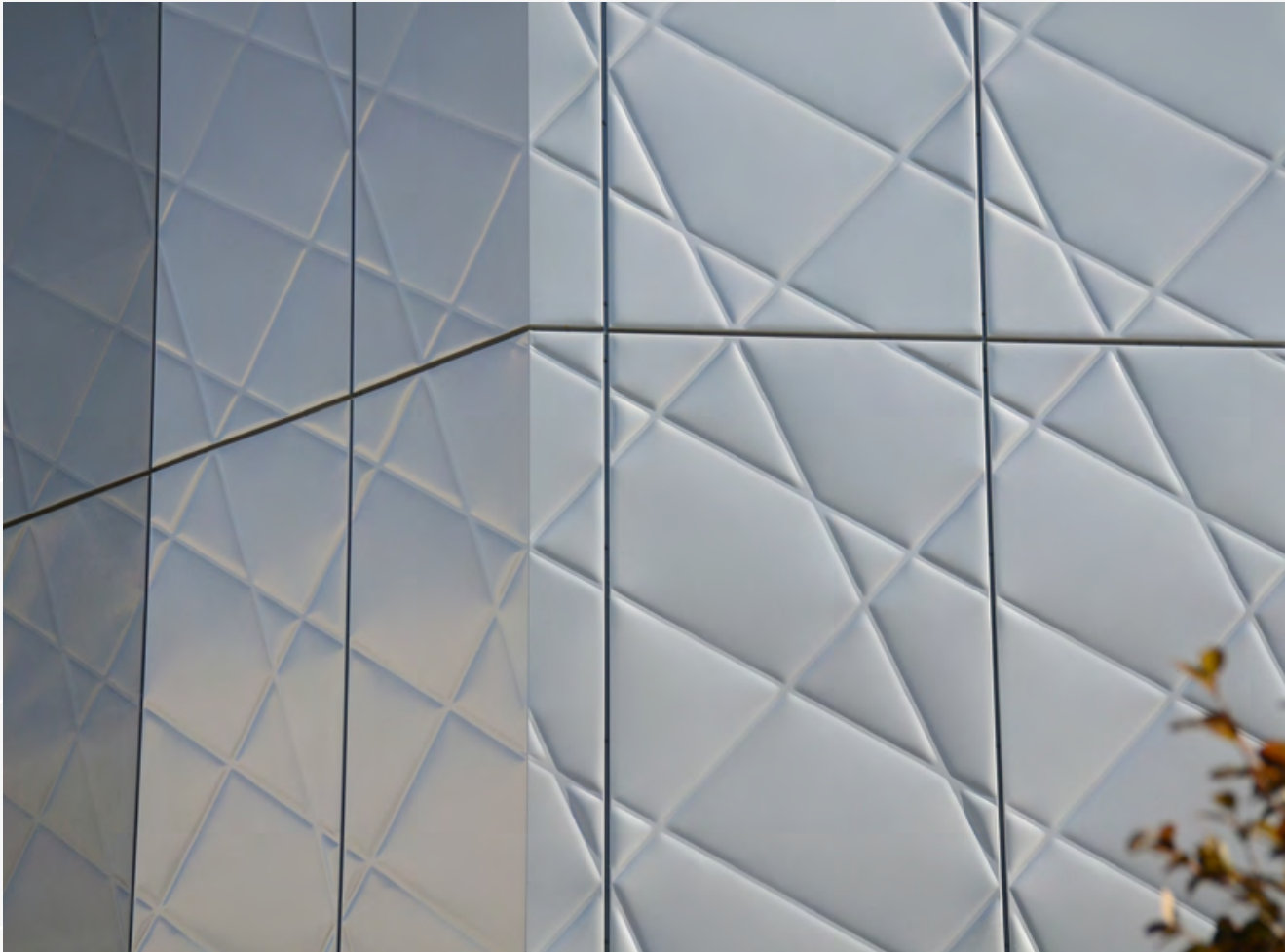
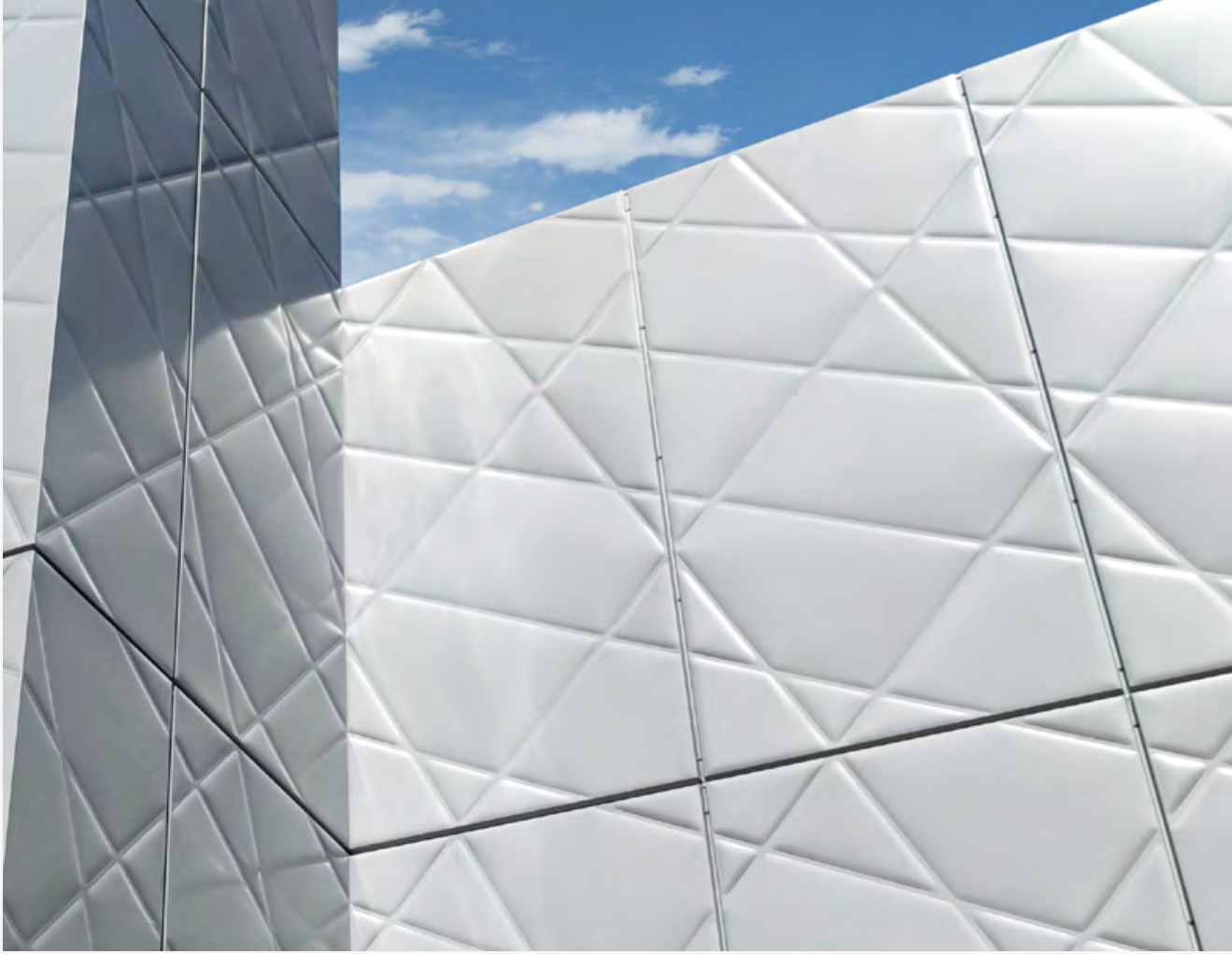




BRANCH

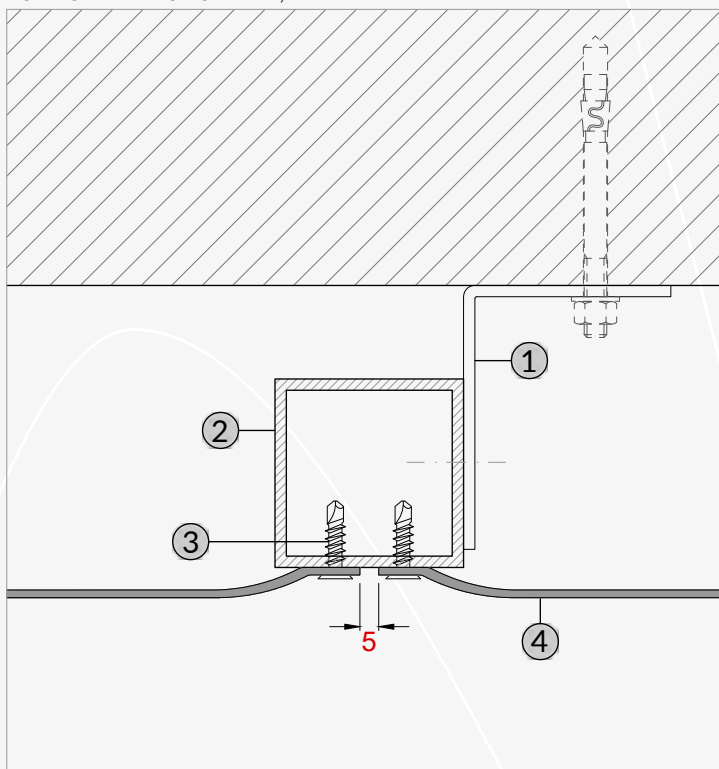


THE EMBOSS
PROJECTS

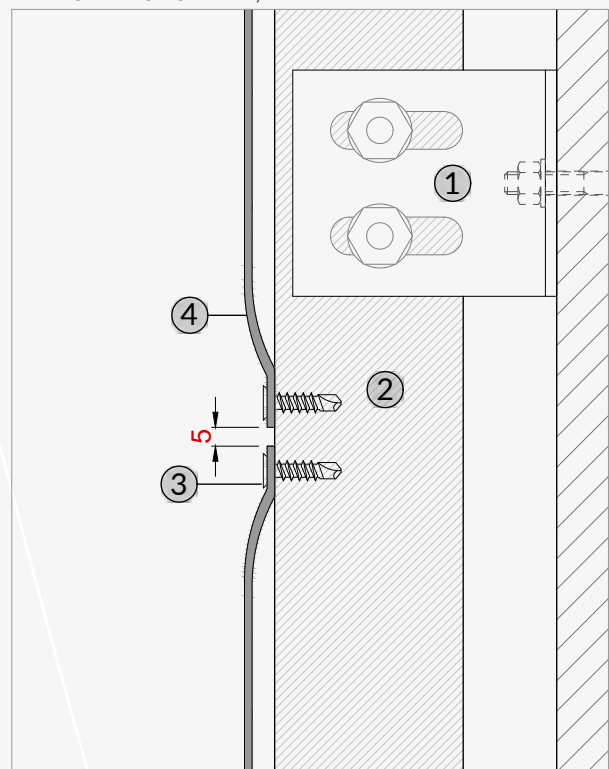


EMBOSS SYSTEM 01

HORIZONTAL SECTION TYPE, 1:2



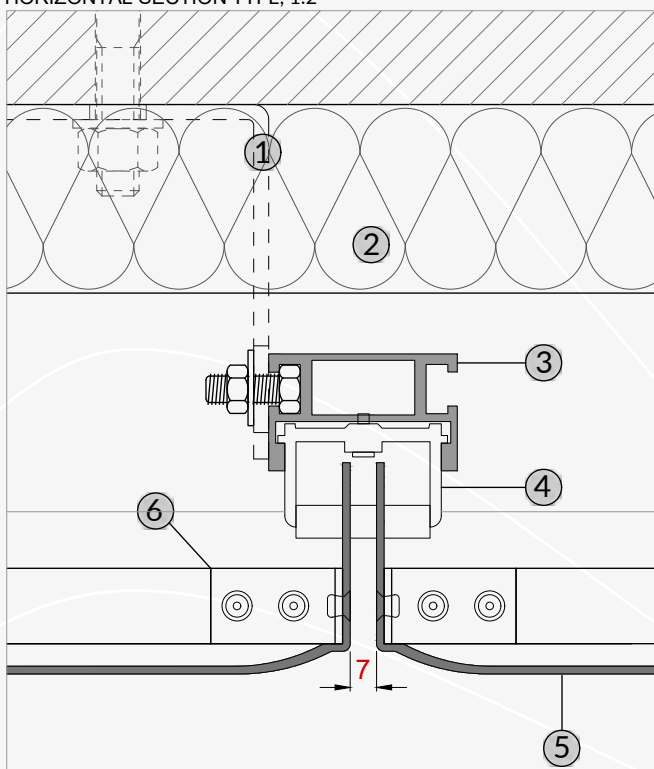
VERTICAL SECTION TYPE, 1:2



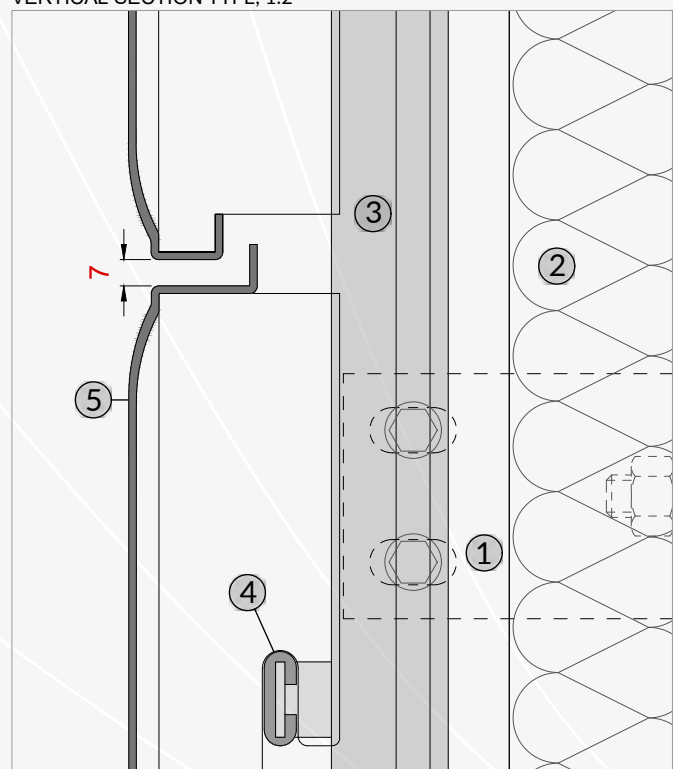
legend: 1_wall bracket, 2_aluminum strut, 3_self-drilling screw, 4_boxed EMBOSS panel.

EMBOSS SYSTEM 02

HORIZONTAL SECTION TYPE, 1:2

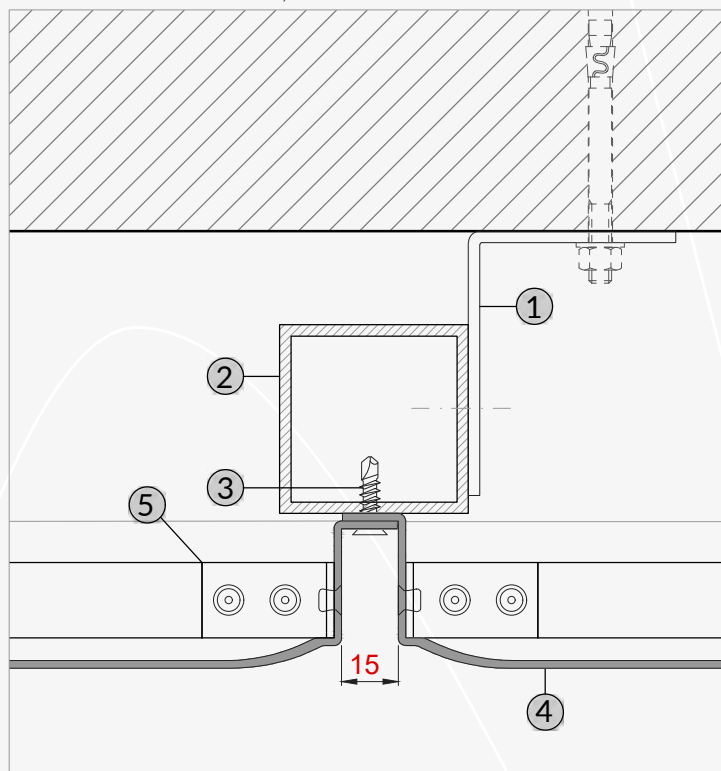


VERTICAL SECTION TYPE, 1:2



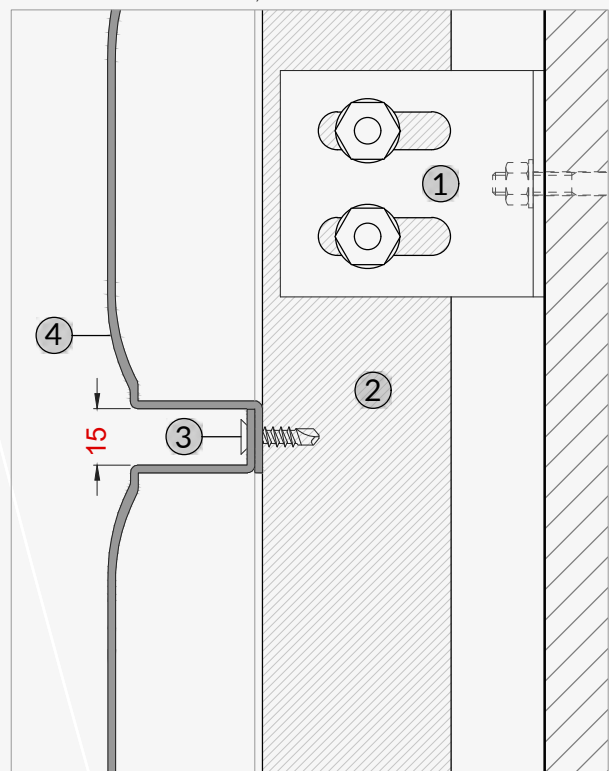
legend: 1_wall bracket, 2_aluminum strut, 3_self-drilling screw, 4_boxed EMBOSS panel, 5_stiffening profile

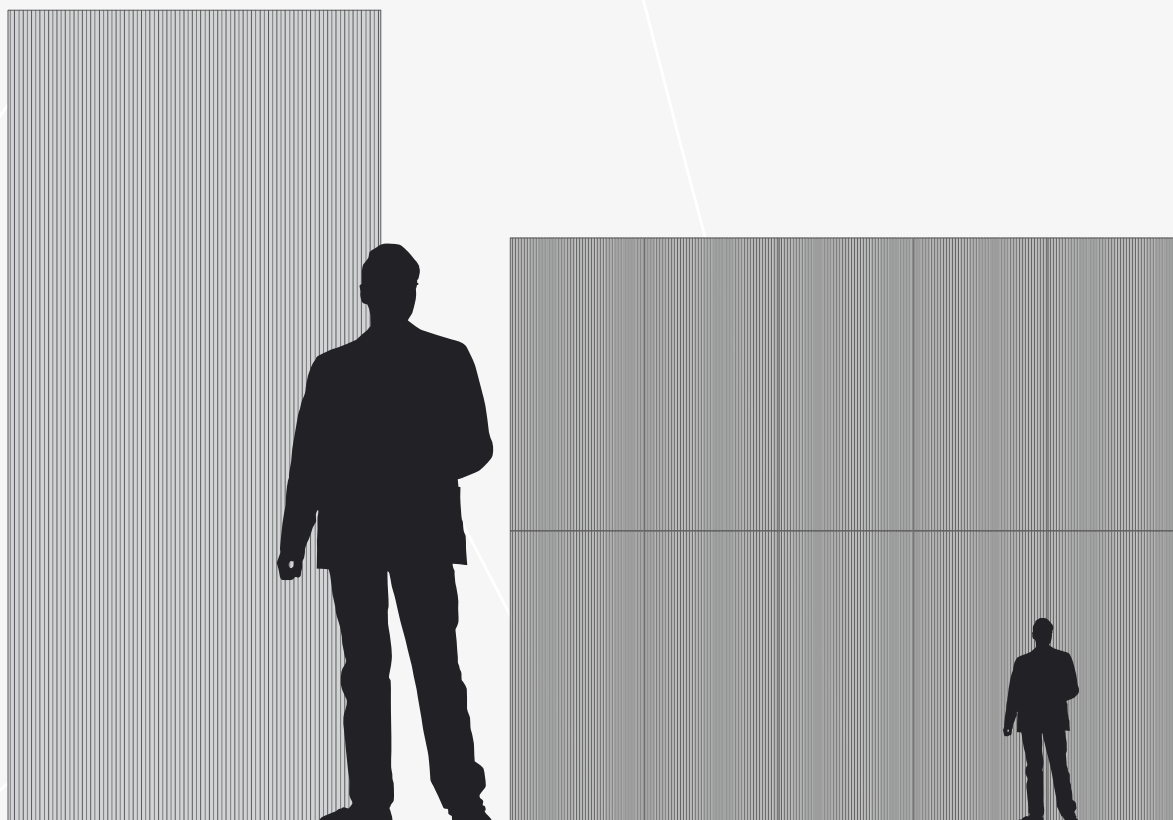
EMBOSS SYSTEM 03 HORIZONTAL SECTION TYPE, 1:2



legend: 1_wall bracket, 2_aluminum strut, 3_self-drilling screw, 4_boxed EMBOSS panel, 5_stiffening profile

VERTICAL SECTION TYPE, 1:2





Standard module: 1150x2500 mm

MATERIAL

Full sheet in aluminum, stainless steel, iron, galvanized iron, brass, copper.
Perforated sheet in aluminum, stainless steel, iron, galvanized iron.
Wire mesh in stainless steel.

SURFACE FINISHING

Natural metal, powder coating, liquid painting, anodizing, electro-coloring,
polished and satin metal.

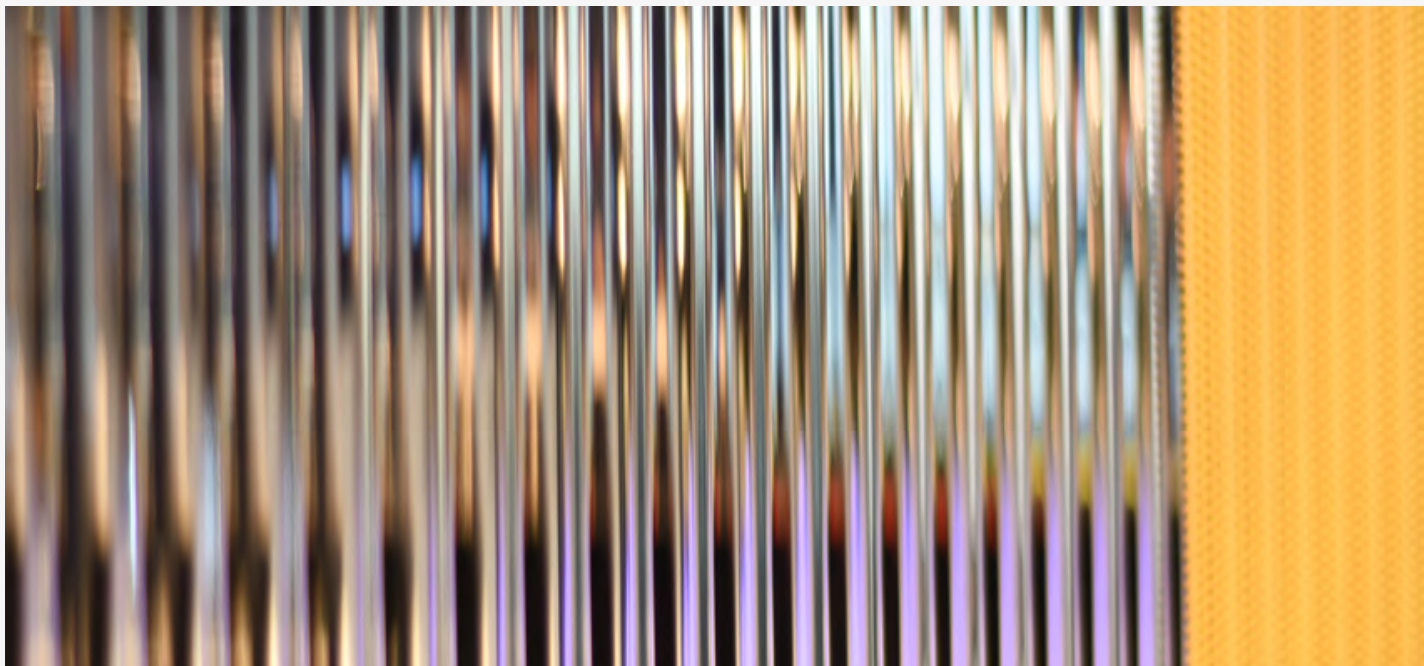
SCOPE OF USE

Facade cladding, interior cladding, false ceilings, railings, etc.

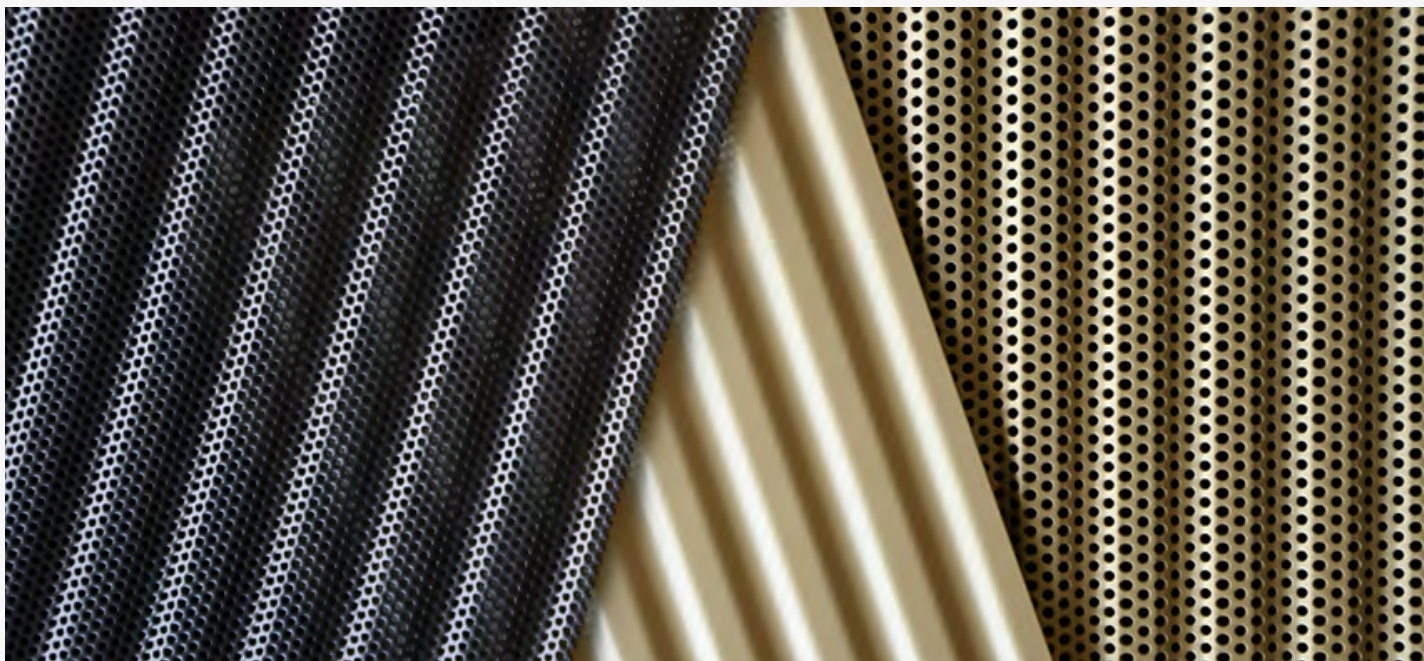
TECHNICAL SPECIFICATIONS

PANEL SIZE	1150x2500 mm (maximum length on request up to 2600 mm)
THICKNESS	from 0,5 mm to 2 mm
PATTERN DEPTH	3 mm

LINE / FULL SHEET



LINE / PERFORATED SHEET



LINE / WIRE MESH

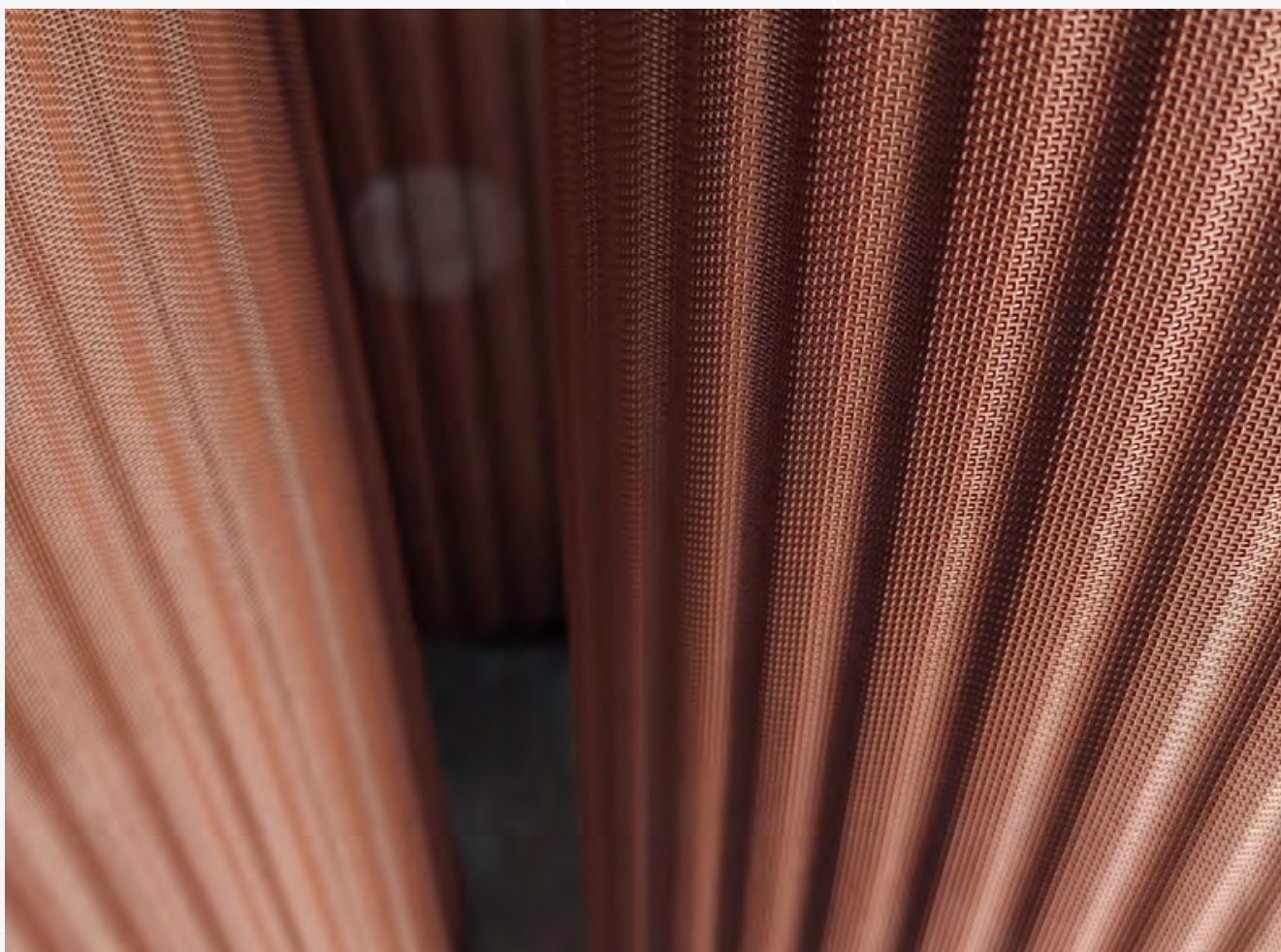




LINE

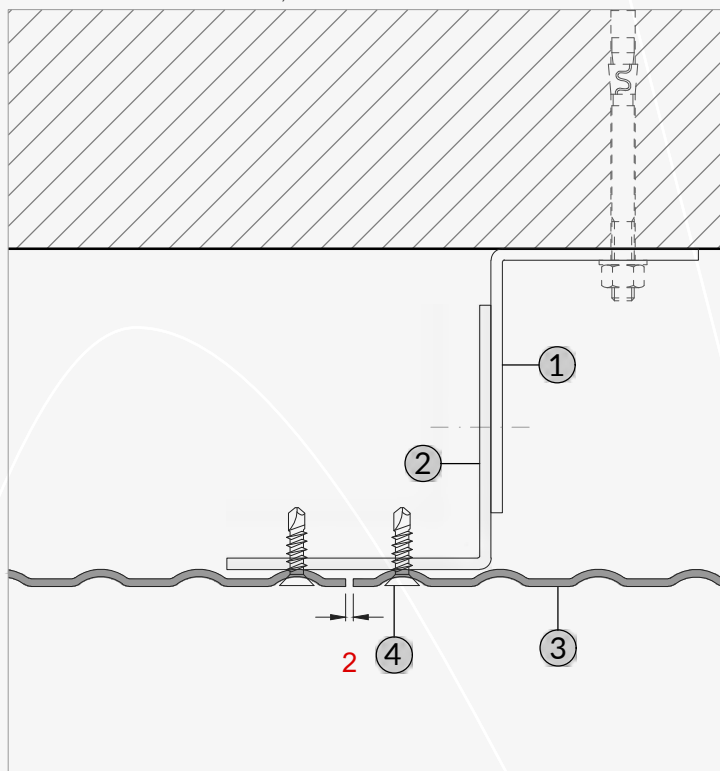


THE EMBOSS PROJECTS

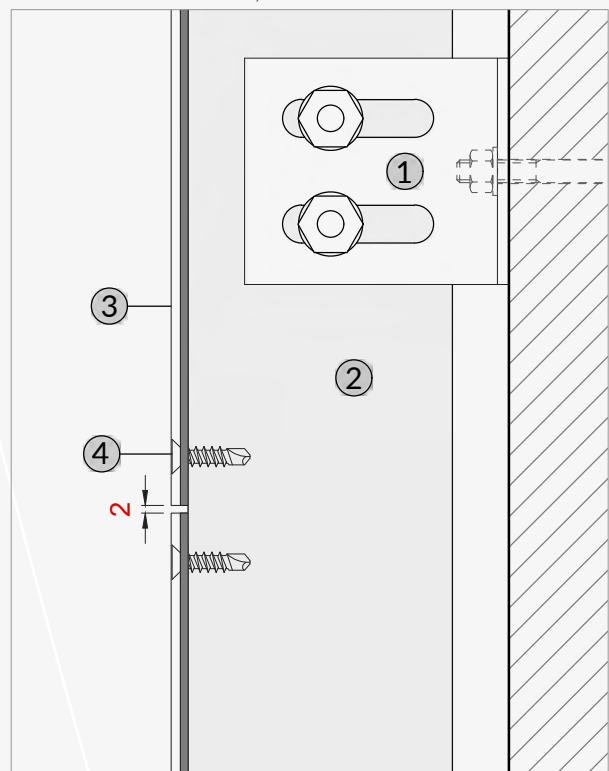


EMBOSS SYSTEM 01

HORIZONTAL SECTION TYPE, 1:2



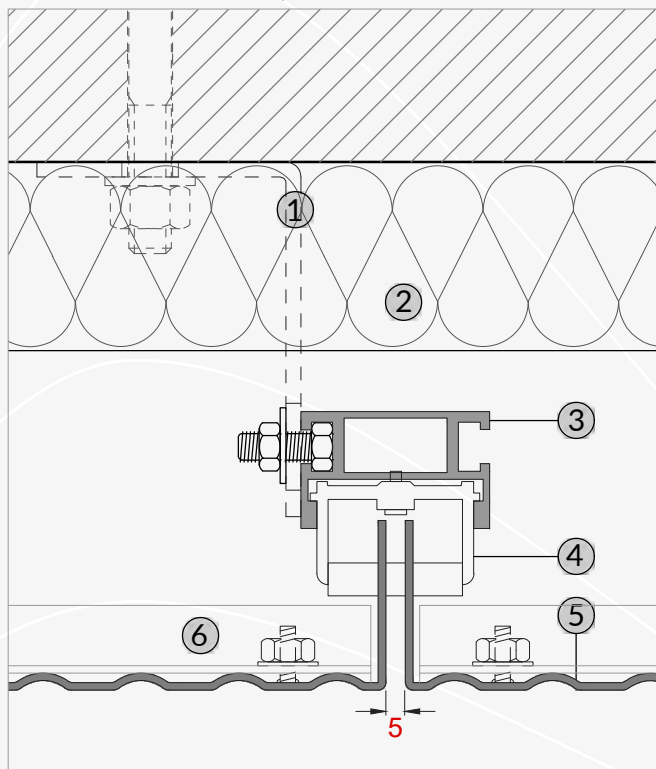
VERTICAL SECTION TYPE, 1:2



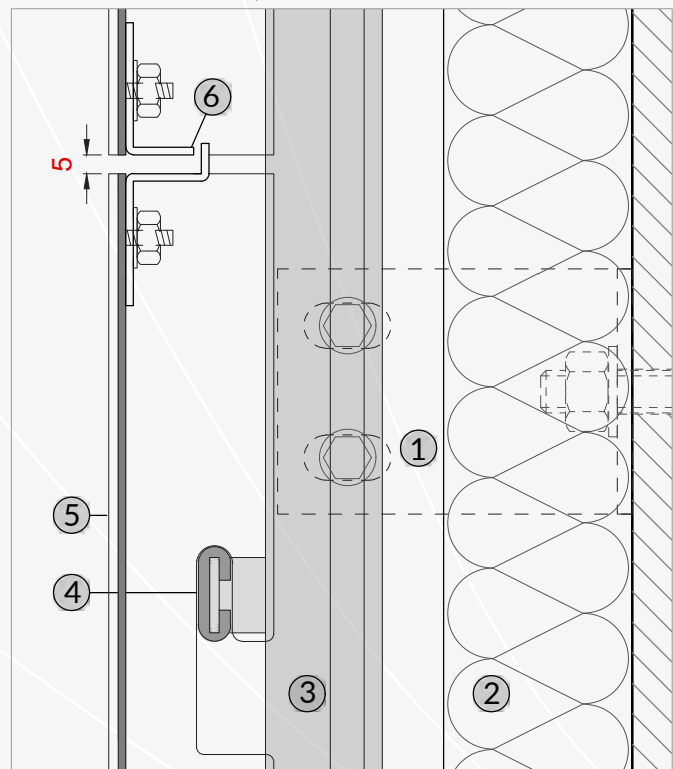
legend: 1_wall bracket, 2_aluminum strut, 3_boxed EMBOSS panel, 4_screw or rivet

EMBOSS SYSTEM 02

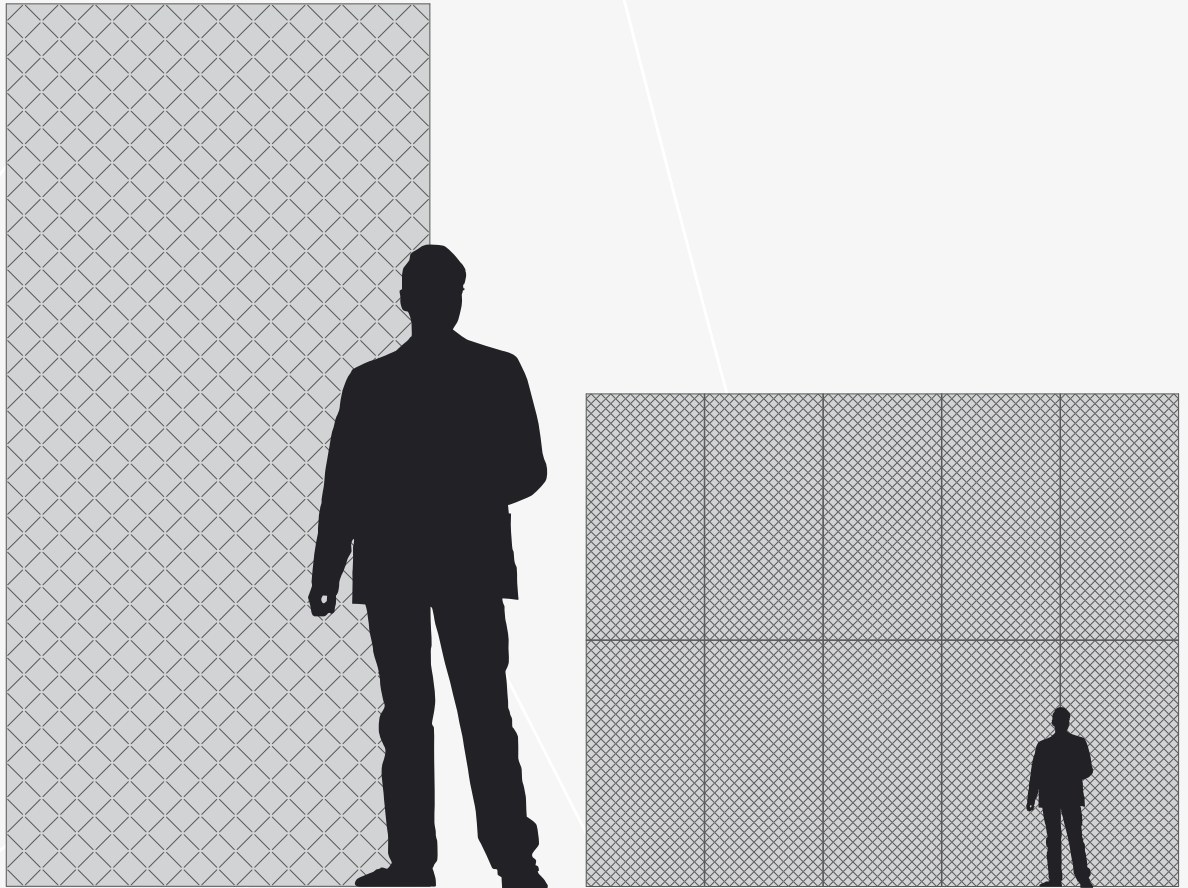
HORIZONTAL SECTION TYPE, 1:2



VERTICAL SECTION TYPE, 1:2



legend: 1_wall bracket, 2_insulating coat, 3_aluminum strut, 4_panel's support with anti-vibration gasket, 5_boxed EMBOSS panel, 6_stiffening profile



Standard module: 1250x2500 mm

MATERIAL

Full sheet in aluminum, stainless steel, iron, galvanized iron, brass, copper.
Perforated sheet in aluminum, stainless steel, iron, galvanized iron.

SURFACE FINISHING

Natural metal, powder coating, liquid painting, anodizing, electro-coloring,
polished and satin metal, corten steel.

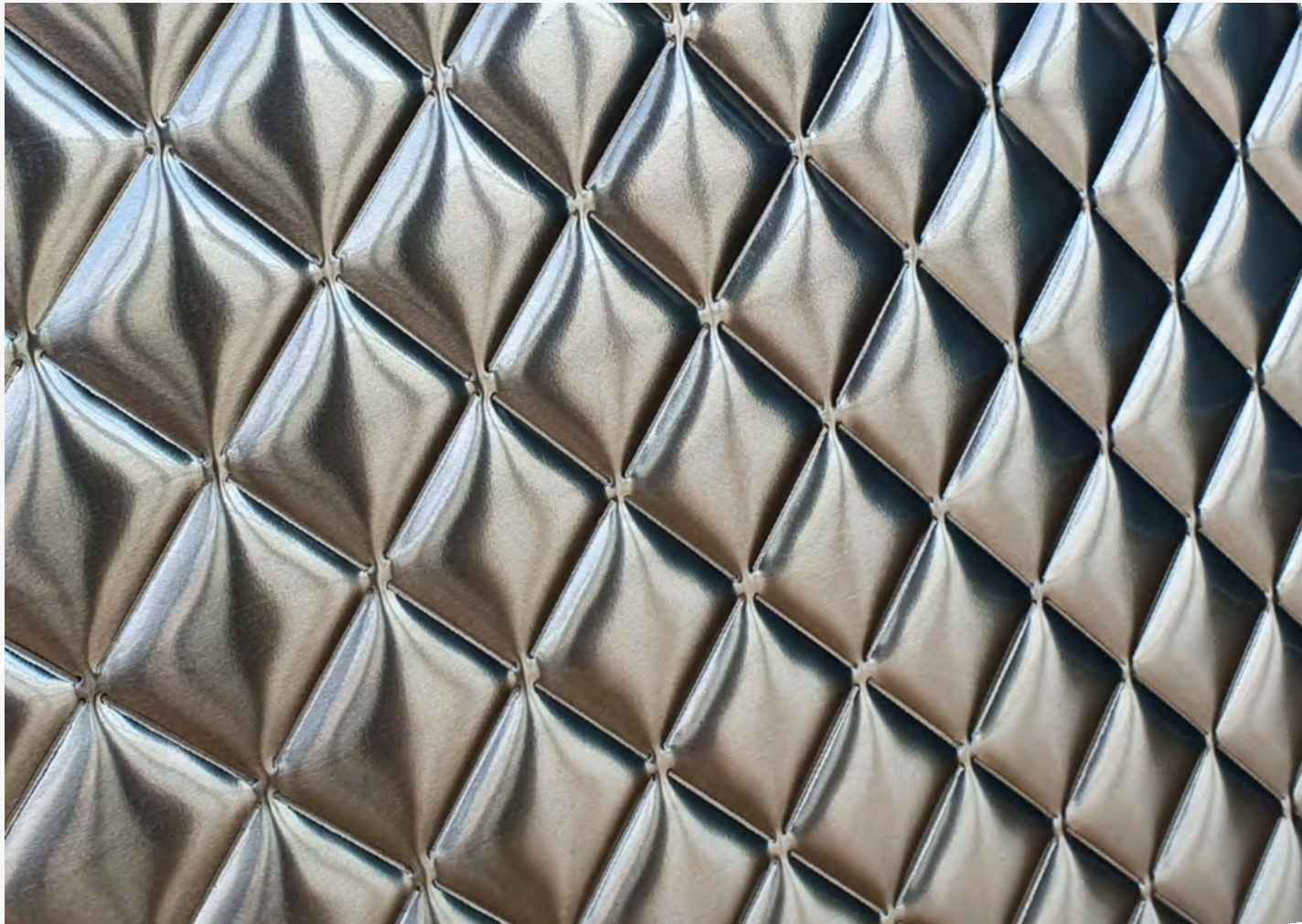
SCOPE OF USE

Facade cladding, interior cladding, false ceilings, railings, etc.

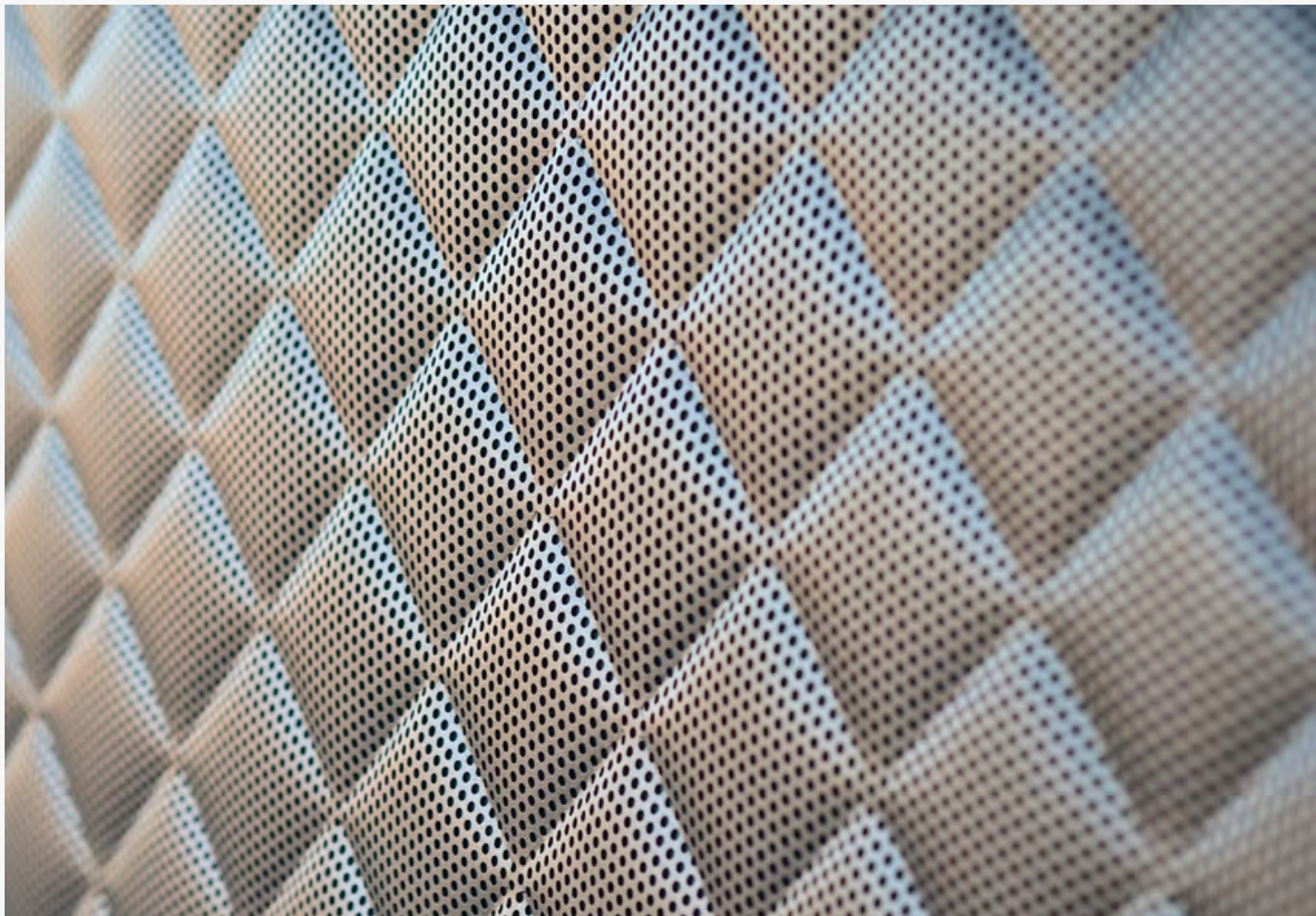
TECHNICAL SPECIFICATIONS

PANEL SIZE	1250x2500 mm
THICKNESS	from 0,5 mm to 3 mm
PATTERN DEPTH	6 mm

QUILT / FULL SHEET



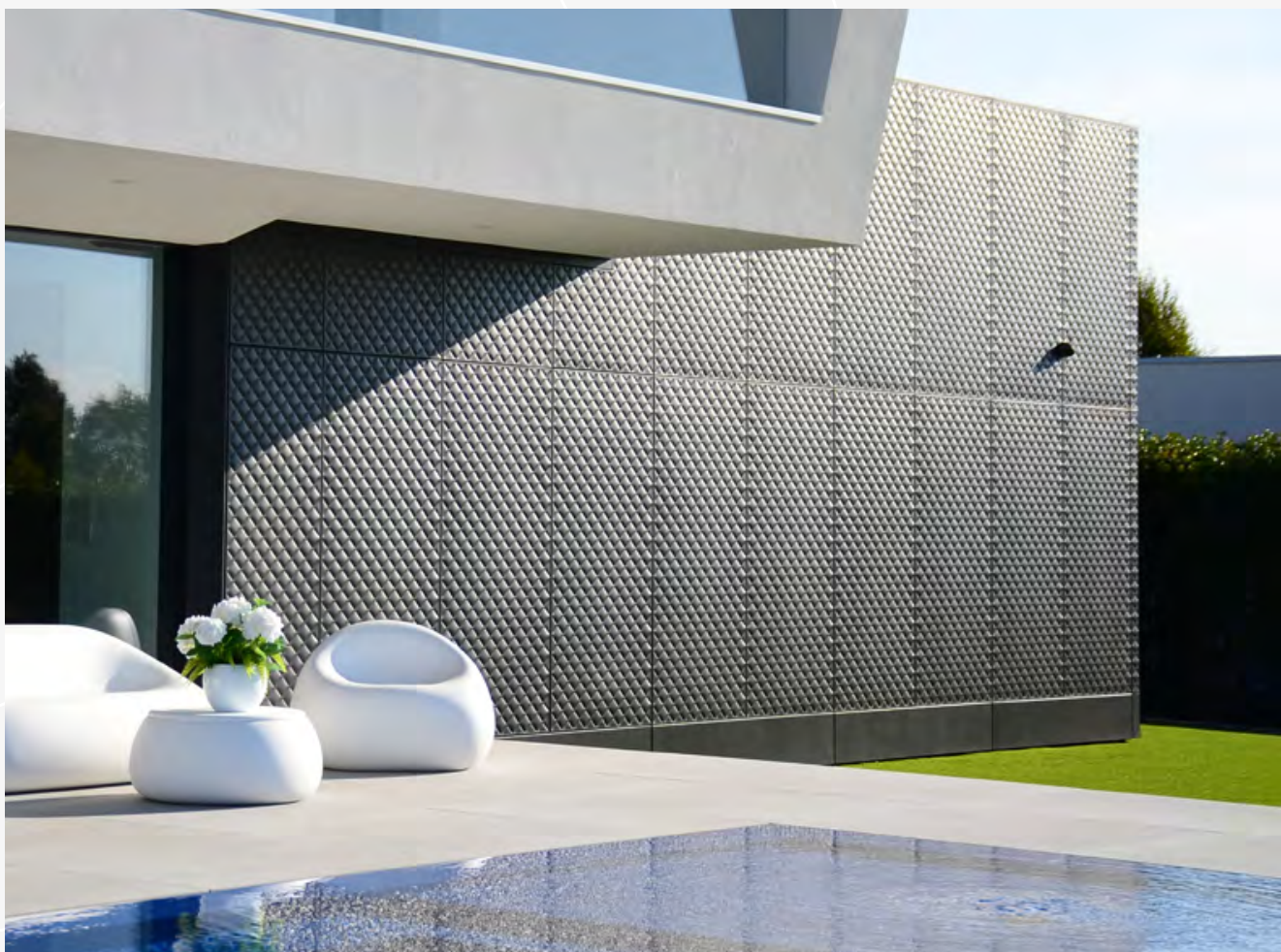
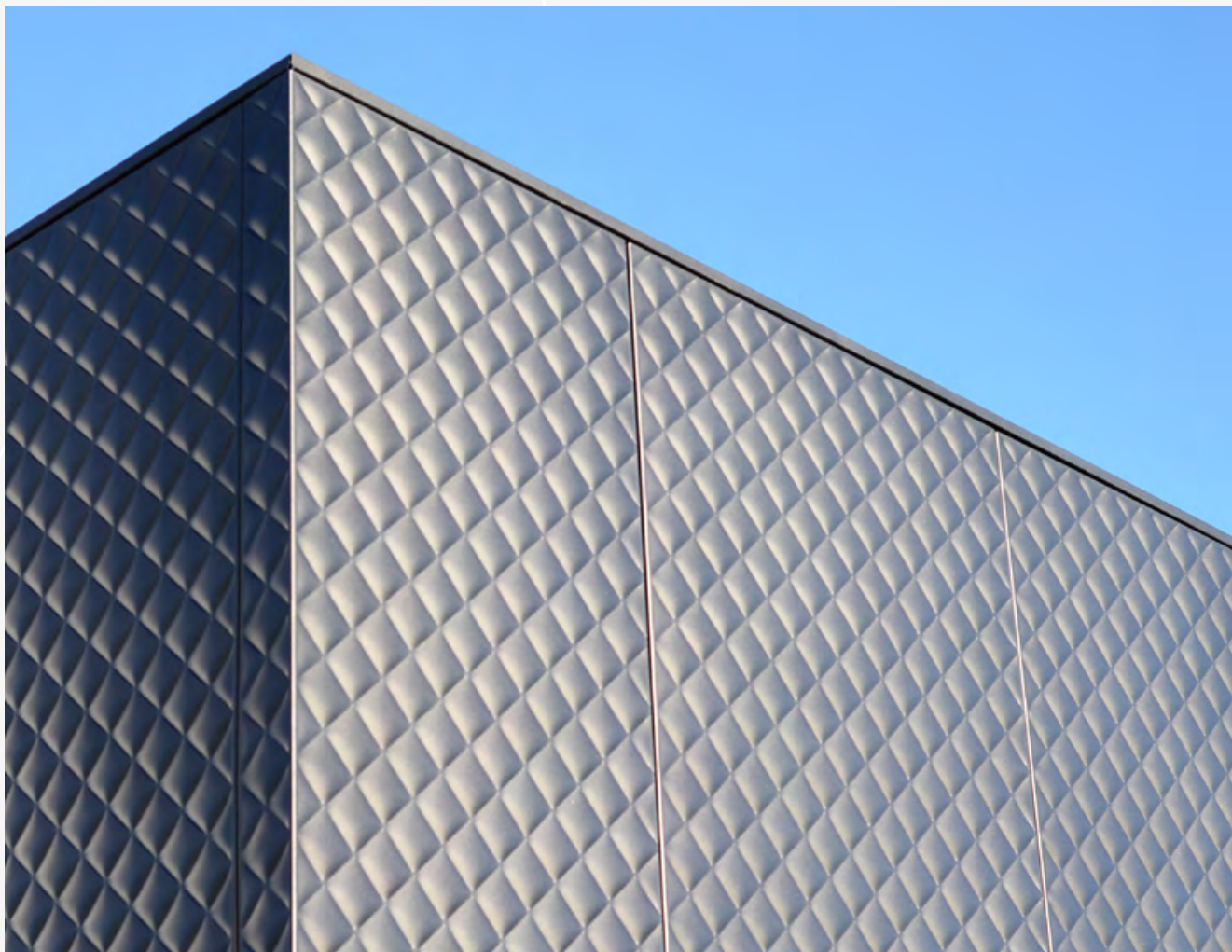
QUILT / PERFORATED SHEET



QUILT

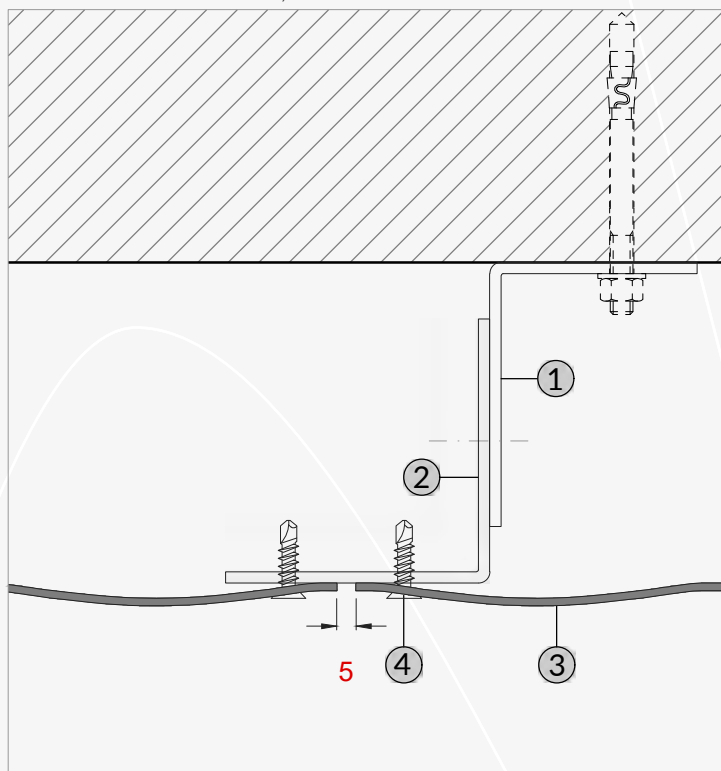


THE EMBOSS
PROJECTS

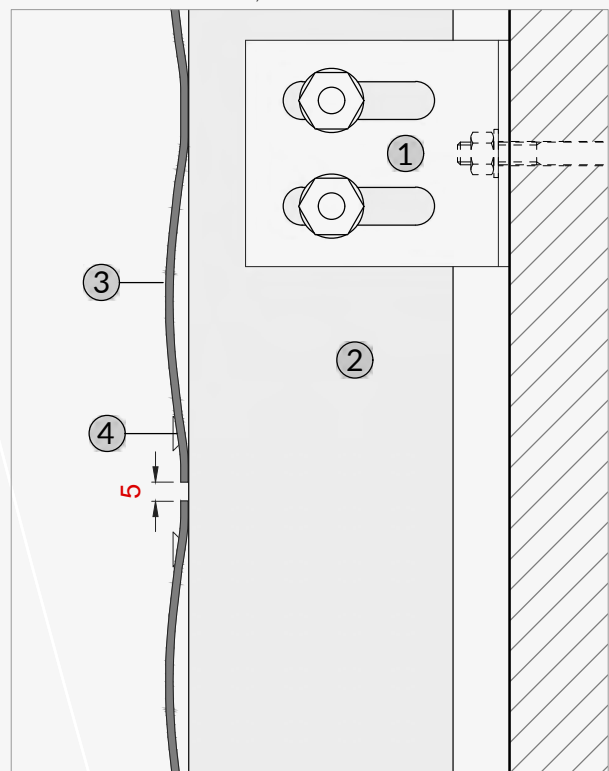


EMBOSS SYSTEM 01

HORIZONTAL SECTION TYPE, 1:2



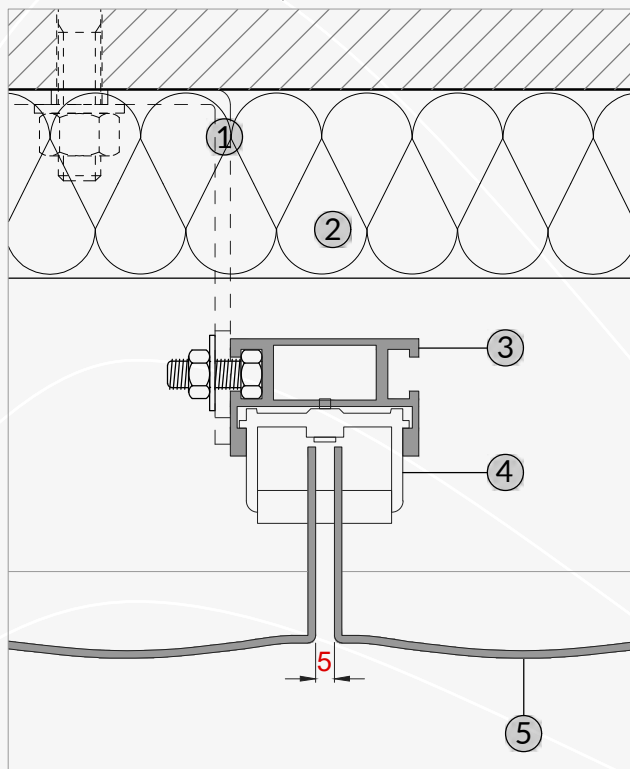
VERTICAL SECTION TYPE, 1:2



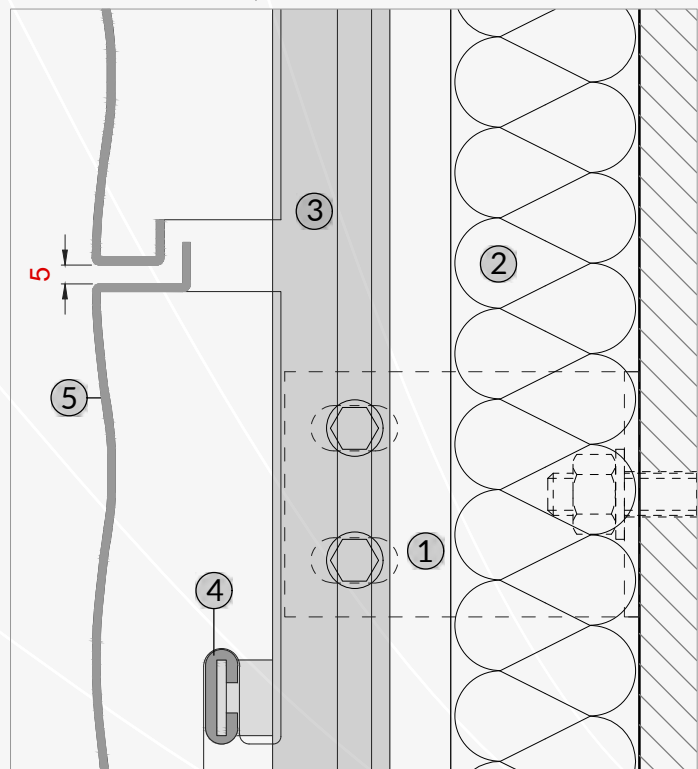
legend: 1_wall bracket, 2_aluminum strut, 3_EMBOSS panel, 4_screw or rivet

EMBOSS SYSTEM 02

HORIZONTAL SECTION TYPE, 1:2

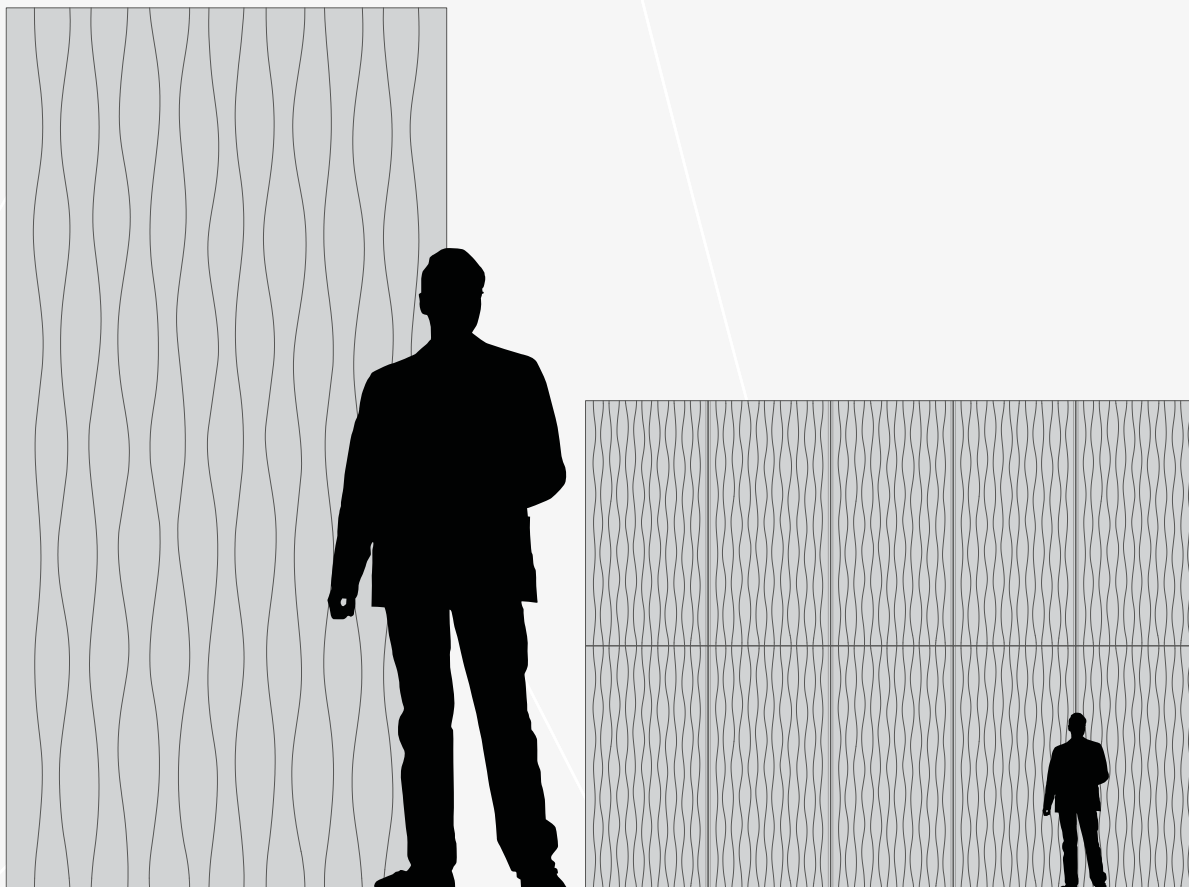


VERTICAL SECTION TYPE, 1:2



legend: 1_wall bracket, 2_insulating coat, 3_aluminum strut, 4_panel's support with anti-vibration gasket, 5_boxed EMBOSS panel

SAND



Standard module: 1250x2500 mm

MATERIAL

Full sheet in aluminum, stainless steel, iron, galvanized iron, brass, copper.
Perforated sheet in aluminum, stainless steel, iron, galvanized iron.

SURFACE FINISHING

Natural metal, powder coating, liquid painting, anodizing, electro-coloring,
polished and satin metal.

SCOPE OF USE

Facade cladding, interior cladding, false ceilings, railings, etc.

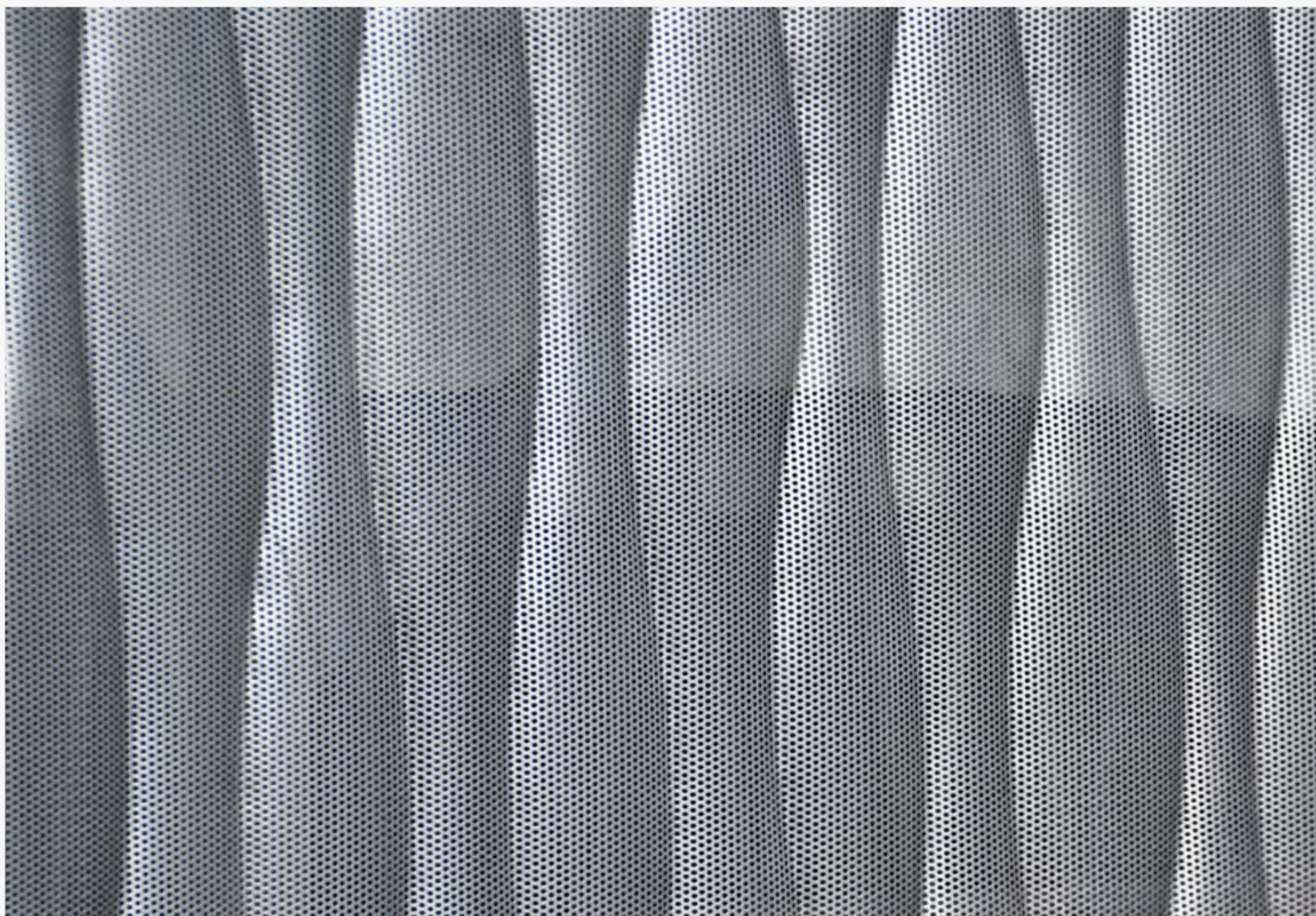
TECHNICAL SPECIFICATIONS

PANEL SIZE	1250x2500 mm
THICKNESS	from 0,5 mm to 3 mm
PATTERN DEPTH	8 mm

SAND / FULL SHEET



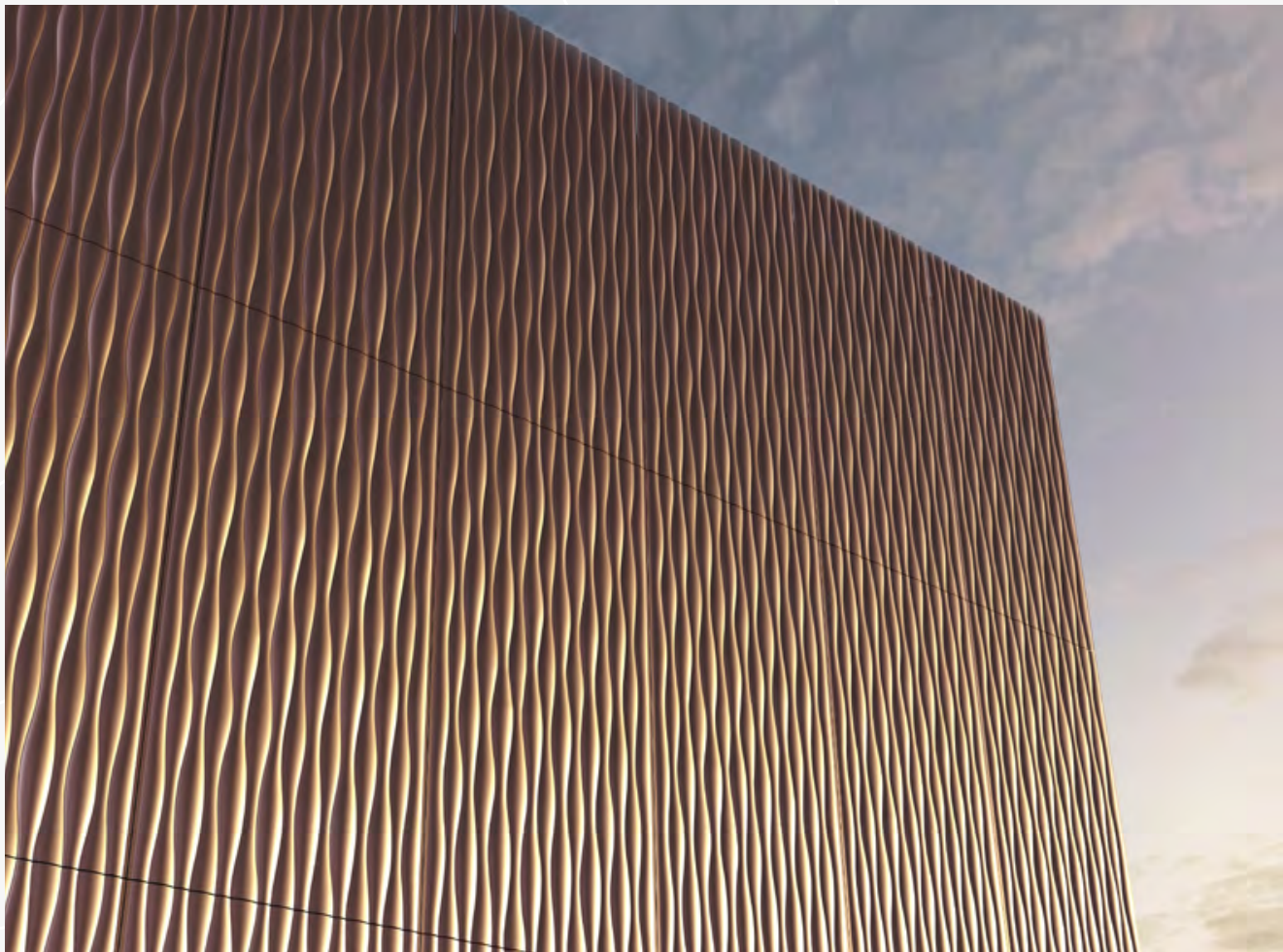
SAND / PERFORATED SHEET



SAND

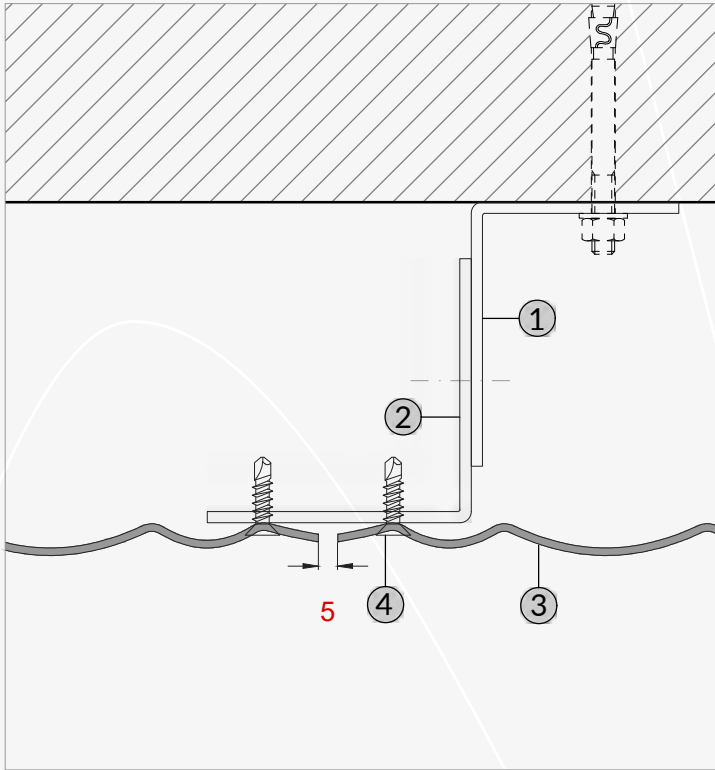


THE EMBOSS
PROJECTS

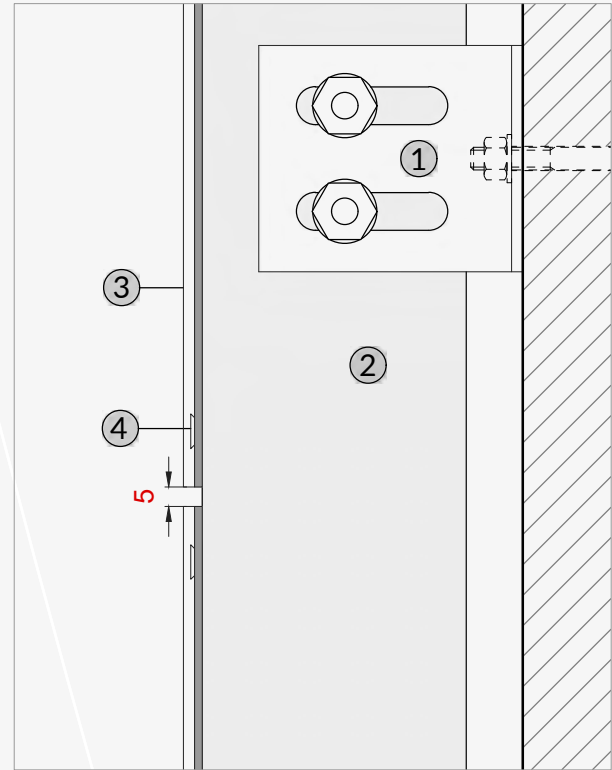


EMBOSS SYSTEM 01

HORIZONTAL SECTION TYPE, 1:2



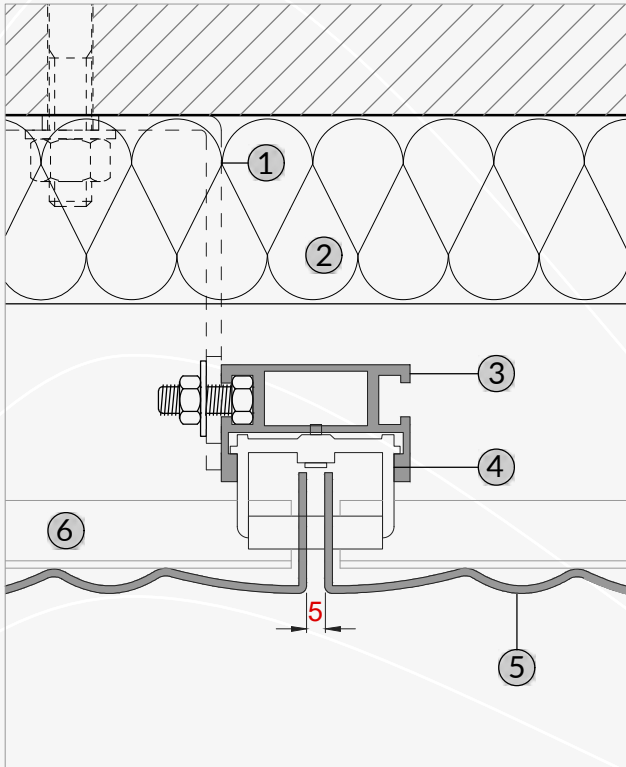
VERTICAL SECTION TYPE, 1:2



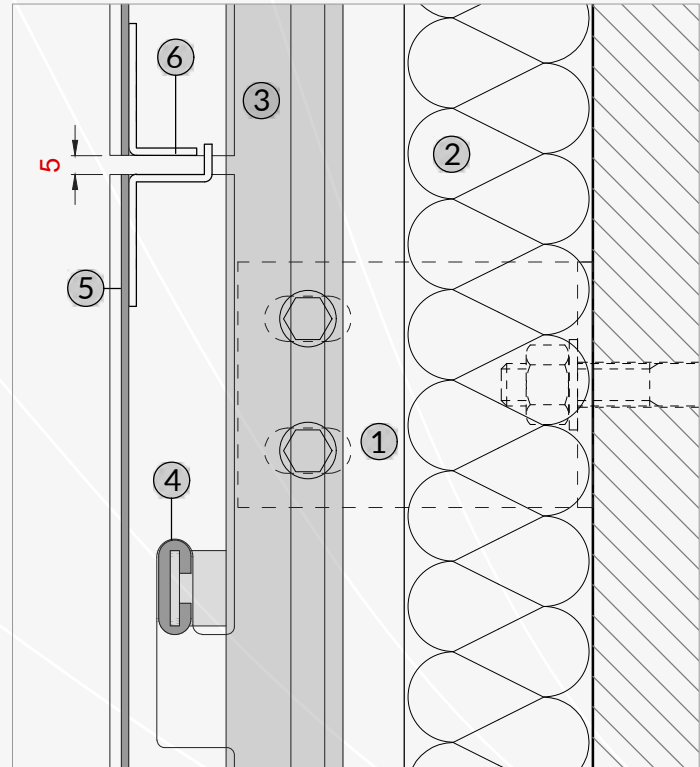
legend: 1_wall bracket, 2_aluminum strut, 3_EMBOSS panel, 4_screw or rivet

EMBOSS SYSTEM 02

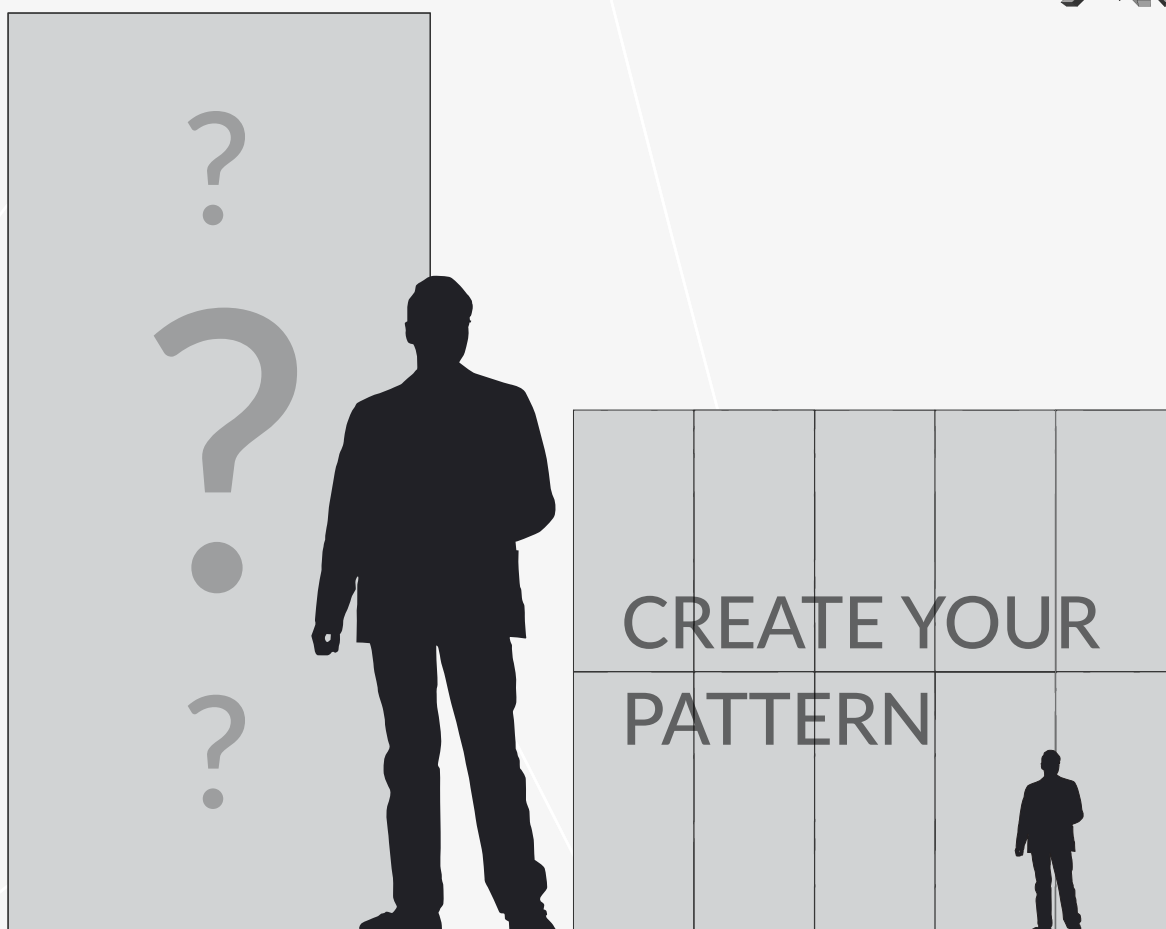
HORIZONTAL SECTION TYPE, 1:2



VERTICAL SECTION TYPE, 1:2



legend: 1_wall bracket, 2_insulating coat, 3_aluminum strut, 4_panel's support with anti-vibration gasket, 5_boxed EMBOSS panel, 6_stiffening profile



Emboss offers the possibility to customize the patterns to give exclusivity and originality to the project. Submit your idea and we will make it happen.

MATERIAL

Full sheet in aluminum, steel, stainless steel, brass, copper.
 Perforated sheet in aluminum, steel, sendzimir galvanized steel, stainless steel.
 Expanded mesh in aluminum and micro expanded mesh in aluminum, steel.

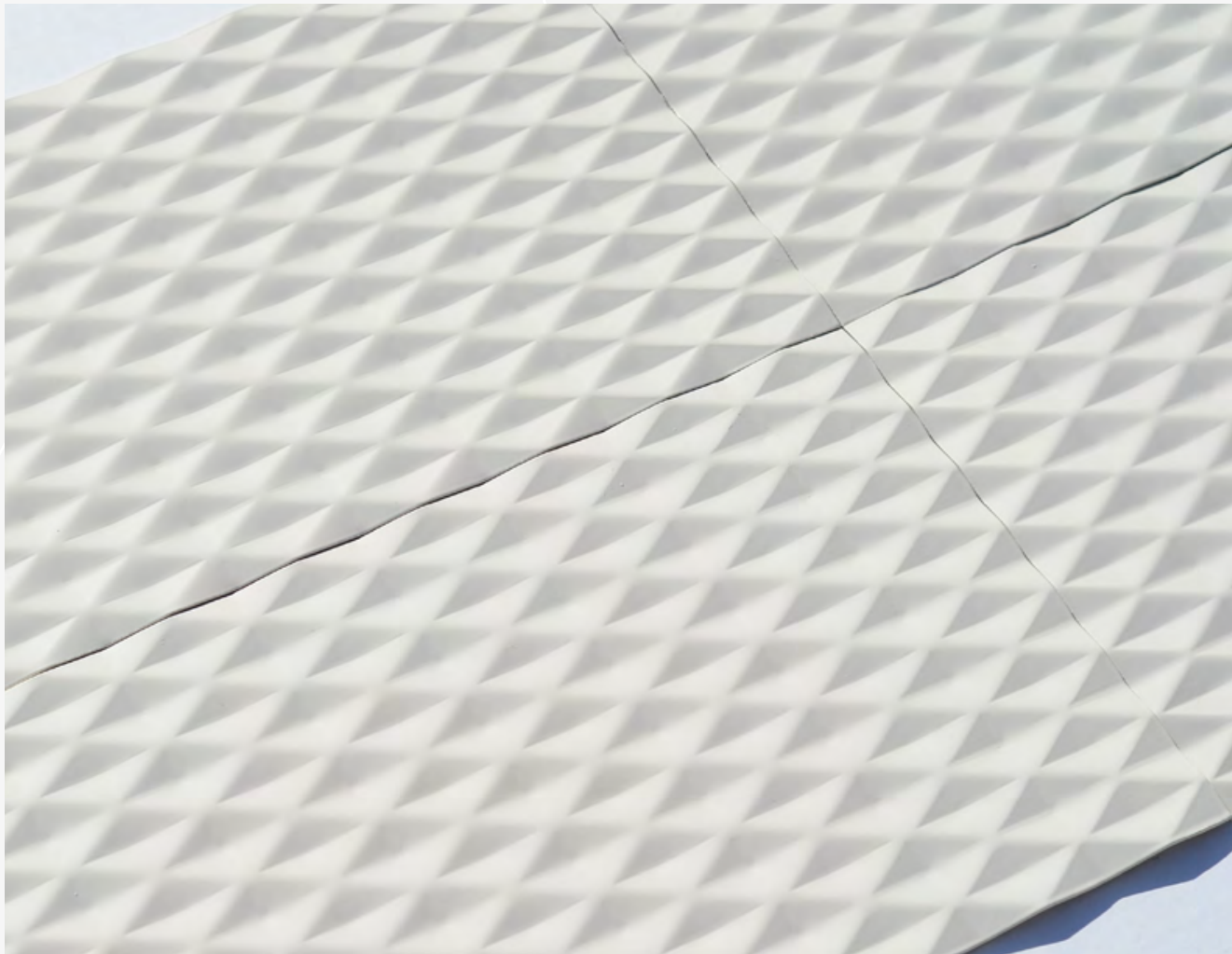
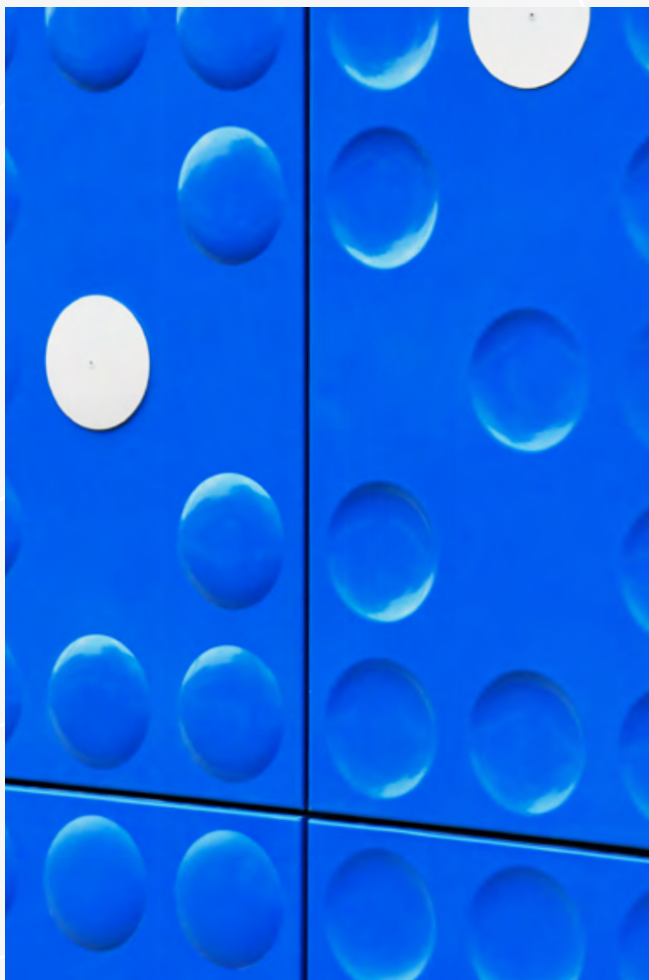
SURFACE FINISHING

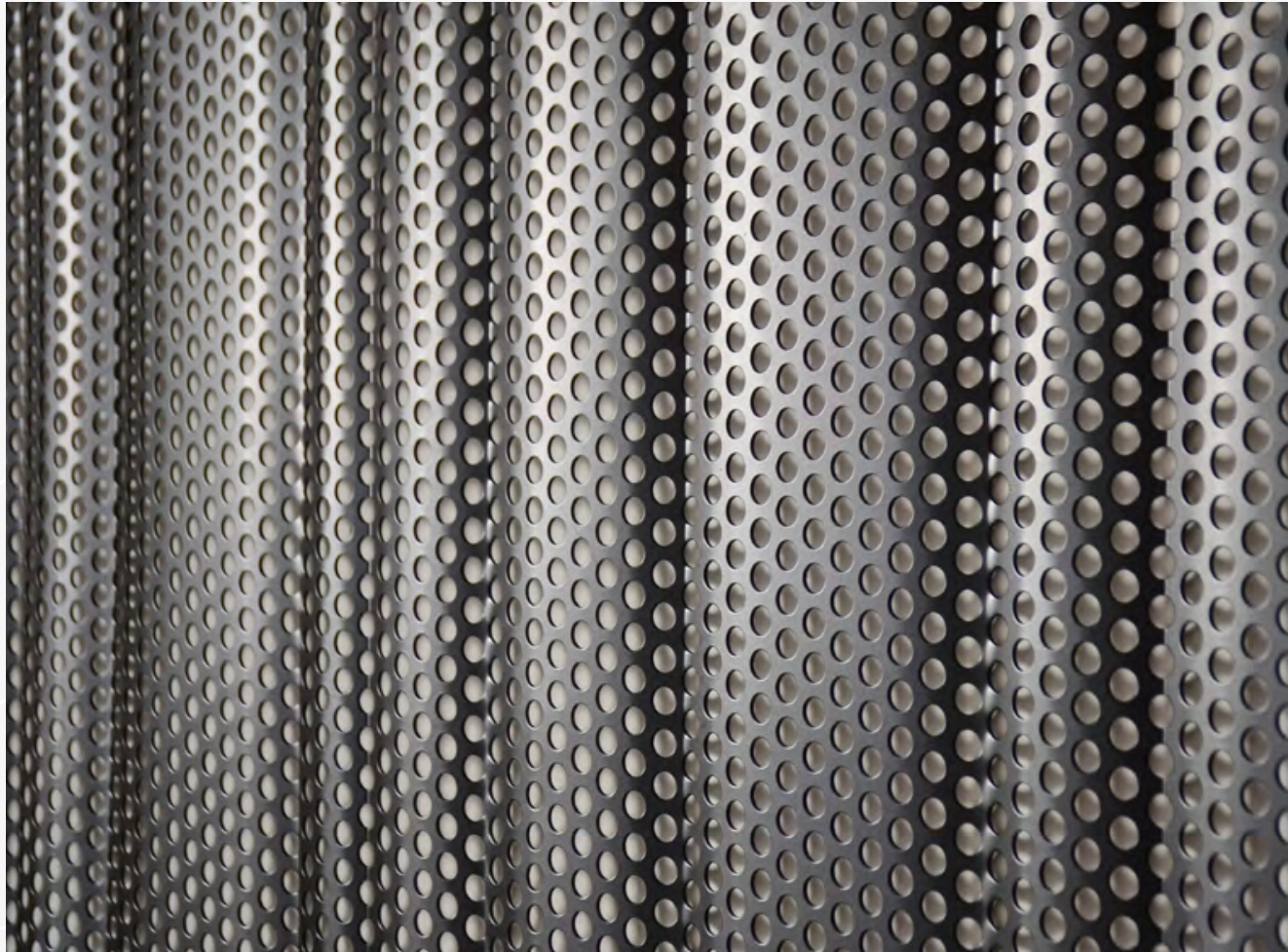
Possibility of creating tailor-made finishes.

TECHNICAL SPECIFICATIONS

PANEL SIZE
 THICKNESS
 PATTERN DEPTH

LIMIT MEASURES 1250x2600 mm
 from 0,5 mm to 3 mm
 VARIABLE





EMBOS S

www.embospanels.com
info@embospanels.com
+39 0424513839



@embospanels

mossyrock.design s.l.
office@mossyrock.at

aut: +43 660 27 36 661
esp: + 34 656 777 792

www.mossyrock.design